

2017 HOLIDAY CATALOG

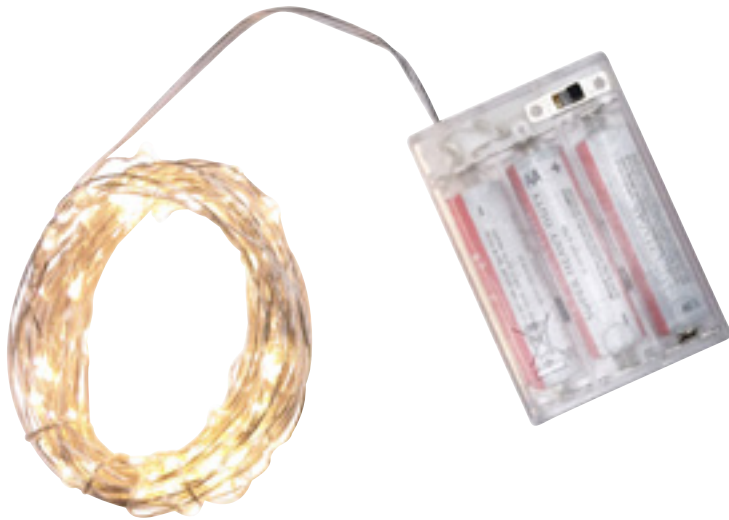
Toll Free: 1-877-985-0405

www.rcsgifts.com



LED String Lights

20 LED - 6' 6.74" • 50 LED - 16' 4.85" • 100 LED 32' 9.7" • SILVER WIRE •
 4.5 V • LED LIGHT LIFESPAN UP TO 50,000 HOURS • 10 CM LIGHT DISTANCE •
 3 AA BATTERIES (NOT INCLUDED)



**LED String Light -
 20 LED White**
 89711-12-0020



**LED String Light -
 50 LED White**
 89712-12-0030



**LED String Light -
 100 LED White**
 89713-12-0540



**LED String Light -
 20 LED Multi Color**
 89714-12-0020



**LED String Light -
 50 LED Multi Color**
 89715-12-0030



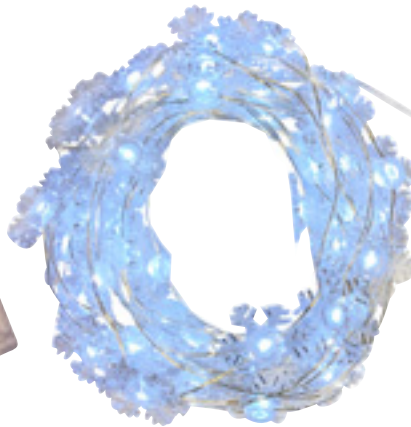
**LED String Light -
 100 LED Multi Color**
 89716-12-0540





LED Icon String Lights

20 LED - 6' 6.74" • 50 LED - 16' 4.85" • 100 LED 32' 9.7" • SILVER WIRE • 4.5 V • LED LIGHT LIFESPAN UP TO 50,000 HOURS • 10 CM LIGHT DISTANCE • 3 AA BATTERIES (NOT INCLUDED)



**LED String Light -
50 LED Snowman**
89717-6-0060



**LED String Light -
50 LED Snowflake**
89718-6-0060



Military Gnomes

13.25"H X 5" DIA BASE • POLYRESIN
EACH OF THE 4 SERVICES RECEIVE A PORTION OF THE SELLING PRICE



Army Gnome
35161-4-0051



Air Force Gnome
35162-4-0051



*A portion of the sales price goes to the support of the USMC Morale, Welfare and Actives Funding.



Marines Gnome
35163-4-0051



Navy Gnome
35164-4-0051



All items in catalog ©2000-2017 Red Carpet Studios, Ltd. All Rights Reserved.

4 | www.rcsgifts.com

™ Department of the Navy. Officially Licensed Product of the Department of the Navy.
© Department of the Air Force. Officially Licensed Product of the Department of the Air Force. (www.airforce.com)
© United States Marine Corps. Officially Licensed Product of the United States Marine Corps (www.marines.com and 1.800.marines).
This product is licensed by the U.S. Army. In accordance with federal law, the Army receives a portion of the proceeds from the sales of the licensed products.

36-PC ASSORTMENT
89621-1-0099



8 09048 89621 3



Wooden Sleigh Ornament Assortment

2.4" X .7" X 4.2" - ORNAMENT • WOOD
21"H X 12"W - DISPLAY • WOOD
\$2.75 EACH • TREE DISPLAY INCLUDED



48-PC ASSORTMENT
89622-1-00801



8 09048 89622 0



Wooden House Ornament Assortment

3.9" X .4" X 4.3" - ORNAMENT • WOOD
21"H X 12"W - DISPLAY • WOOD
\$2.25 EACH • TREE DISPLAY INCLUDED



Wooden Holiday Ornament Assortment

2.5" X .3" X 2.6" - ORNAMENT • POLYRESIN
18.5"H X 11"W - DISPLAY • WOOD
\$2.25 EACH • TREE DISPLAY INCLUDED

48-PC ASSORTMENT
89623-1-00801



80-PC ASSORTMENT
89624-1-00061



Wooden Santa & Snowman Ornament Assortment

2" X .2" X 3.7" - ORNAMENT • WOOD
18.5"H X 11"W - DISPLAY • WOOD
\$2.00 EACH • TREE DISPLAY INCLUDED



Holiday Bell Ornament Assortment

2.6" X 2.6" X 2.4" - ORNAMENT • METAL
 17"H X 9.5"W - DISPLAY • WOOD
 \$2.25 EACH • TREE/BOX DISPLAY INCLUDED



48-PC ASSORTMENT
 89625-1-00801



Wood Sleigh Decoration

5.9" X 2" X 13.6" • WOOD



Snowman Sleigh
 89641-3-0570



Santa Sleigh
 89642-3-0570





– Wood LED Holiday Decoration

10.2" X 2.4" X 17.2" - SNOWMAN • WOOD/LED LIGHTS
 9.1" X 1.8" X 15.4" - SANTA • WOOD/LED LIGHTS
 2 AA BATTERIES REQUIRED (NOT INCLUDED)



LED Snowman Tree
 89631-2-0051



LED Santa House
 89632-2-0051



— Holiday Lantern Decoration

4.5" X 4.5" X 10" - SNOWMAN • METAL/GLASS
 5.1" X 5.1" X 9.1" - SANTA • METAL/GLASS
 USE WITH LED LIGHTS ON PAGES 2-3 OR WITH CANDLES



Snowman Lantern
 89651-2-0041



Santa Lantern
 89652-2-0041



Holiday Night Lights

5" X 6 "X 3" • GLASS • METAL

16-PC ASSORTMENT
89740-16-0008

8 09048 89740 1



Snowman
89741-4-0050

8 09048 89741 8



Santa
89742-4-0050

8 09048 89742 5



Penguin
89743-4-0050

8 09048 89743 2



Candy Canes
89744-4-0050

8 09048 89744 9



Holiday Lantern

9.5" L X 7" W X 4.5" H • METAL • GLASS • 4 AA BATTERIES REQUIRED (NOT INCLUDED)
BRIGHT LED LIGHTS • TIMER FUNCTION-6 HOURS ON, 18 HOURS OFF



Snowflake
89761-6-0570

8 09048 89761 6



48-PC ASSORTMENT
89096-1-0069



Christmas Groovers Assortment

4.5"H • SANTA • SNOWMAN • PENGUIN • \$2.00 EACH



48-PC ASSORTMENT
79096-1-0069



Halloween Groovers Assortment

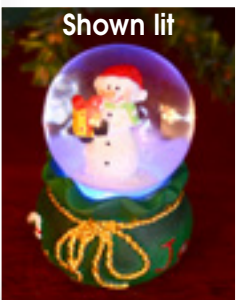
4"H /SKELETON • 4.25"H/WITCH • 4.25"H/JACK O'LANTERN • \$2.00 EACH



Light Up Snow Globes Assortment

2.5" X 2" X 3" • POLY RESIN • WATER • PLASTIC • 4 DESIGNS • 3 LR41 BATTERIES INCLUDED • \$2.00 EACH

24-PC ASSORTMENT
89895-1-0084



Acrylic Holiday Village Assortment

2.5" X 5.5" X 3.5" • PLASTIC • FABRIC • 4 DESIGNS • 2 SNOWMEN • 1 SANTA • 1 BEAR • \$2.75 EACH

20-PC ASSORTMENT
89797-1-0055



30-PC ASSORTMENT

INCLUDES

89721, 89722, 89725, 89726, 89727

89720-30-0009



8 09048 99056 0

Ornament/Table Top Tea Lights

4.75" H • GLASS • PLASTIC • LIGHT UP RED, GREEN & BLUE • ON/OFF SWITCH • EXTRA BATTERIES INCLUDED • L41 BATTERIES • TEA LIGHT INCLUDED



Jewel Angel
89721-6-0030



8 09048 89721 0



Pearl Angel
89722-6-0030



8 09048 89722 7



Lace Angel
89725-6-0030



8 09048 89725 8



Snowflake Angel
89726-6-0030



8 09048 89726 5



Scroll Angel
89727-6-0030



8 09048 89727 2



Shown lit



**NOT INCLUDED
IN ASSORTMENT**
Snowman
89723-6-0030



8 09048 89723 4



**NOT INCLUDED
IN ASSORTMENT**
Santa
89724-6-0030



8 09048 89724 1

LED Ornament Assortment

2.95"H/3" WITH RIBBON • POLYFOAM/RIBBON • 12 DESIGNS • 12.6" X 9.44" X 3.15"(12"H WITH LID) - PDQ • 3 FLASHING WHITE LIGHT 3 LR44 BATTERIES INCLUDED • ON/OFF SWITCH • \$3.50 EACH

12-PC ASSORTMENT

89792-2-0024





12-PC ASSORTMENT
89794-2-0024



Shimmery Snowman Light Up Ornament Assortment

4.75" WITH RIBBON • PLASTIC/RIBBON • 4 DESIGNS (3 EACH) •
9.5" X 7.25" X 3.25" - PDQ • LIGHTS UP • 3 LR44 BATTERIES INCLUDED •
ON/OFF SWITCH • \$3.50 EACH



12-PC ASSORTMENT
89791-2-0024



LED Nose Character Ornament Assortment

3.46"H/3" WITH RIBBON • POLYFOAM/RIBBON • 6 DESIGNS (2 EACH) •
13" X 3.25" X 10" - PDQ • 3 FLASHING WHITE LIGHTS & NOSE •
3 LR44 BATTERIES INCLUDED • ON/OFF SWITCH • \$3.50 EACH



LED Glass Globe Table Top/Ornament

4.75" DIA/5.75" X 6.5" X 5.75" BOXED • GLASS/PLASTIC •
GOLD ACCENTS • 3 INDIVIDUALLY BOXED DESIGNS •
MULTI COLOR CHANGING LIGHTS • PADDED FEET FOR TABLE TOP DISPLAYING •
3 LR44 BATTERIES INCLUDED • ON/OFF SWITCH

12-PC ASSORTMENT
89610-12-0087



**LED Glass Globe -
Angel**
89611-4-0560



**LED Glass Globe -
Snowman**

89612-4-0560



**LED Glass Globe -
Nativity**

89613-4-0560





12-PC ASSORTMENT
89793-2-0572



LED Glass Ball Ornament Assortment

2.75" DIA • GLASS/PLASTIC • GOLD ACCENTS • 4 DESIGNS (3 EACH) •
13" X 10" X 4.25" - PDQ • MULTI COLOR CHANGING LIGHTS •
PADDED FEET FOR TABLE TOP DISPLAYING • 3 LR44 BATTERIES INCLUDED •
ON/OFF SWITCH • \$2.29 EACH



LED Light Changes Color



12-PC ASSORTMENT
89790-2-0003



Mini Glass Angel Ornament Assortment

2.75" DIA • GLASS • GLITTER ACCENTS • 1 DESIGNS (12 EACH) •
INDIVIDUALLY BOXED • 2.25" X 2.25" X 4.25" - ACETATE BOX
10.25" X 7.5" X 4.5" - PDQ • MULTI COLOR CHANGING LIGHTS •
• 3 LR44 BATTERIES INCLUDED • ON/OFF SWITCH • \$2.50 EACH



LED Glass Ornament Sets

2.36" X 2.36" X 5.12"- ANGELS • GLASS •
 2.76" X 2.76" X 5.12"- TEAR DROP • GLASS •
 WHITE LIGHTS • 3 LR44 BATTERIES INCLUDED •
 ON/OFF SWITCH



**LED White Tinsel
 Angel - Set of 2**
 89945-6-0550



**LED Woodland Snow
 Angel - Set of 2**
 89946-6-0550



**LED Teardrop
 Winterberry - Set of 2**
 89948-6-0040



Lighted Angel Sets

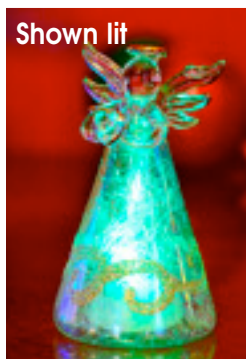
GLASS • ANGELS LIGHT UP RED, GREEN & BLUE •
 ON/OFF SWITCH • EXTRA BATTERIES INCLUDED • L41 BATTERIES



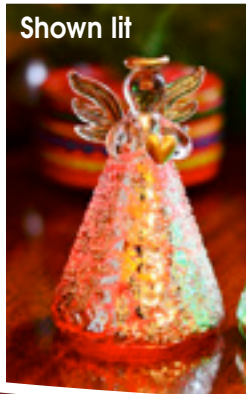
**Scroll Angels -
 Set of 2**
 89942-6-0050
 1.75"W x 3.5"T



**Textured Angels -
 Set of 2**
 89943-6-0050
 1.75"W x 3.5"T



Shown lit



Shown lit





18-PC ASSORTMENT
89920-18-0036



Lighted Trees

10" T (L), 8" T (M), 6" T (S) • ACRYLIC • TREES LIGHT UP RED, GREEN, PURPLE & BLUE • ON/OFF SWITCH • EXTRA BATTERIES INCLUDED
3 AG10 BATTERIES (SMALL & MEDIUM) • 3 AAA BATTERIES (LARGE)



Christmas Tree w/ LED
- Small 6" T
89924-6-0520



Christmas Tree w/ LED
- Medium 8" T
89925-6-0030



Christmas Tree w/ LED
- Large 10" T
89926-6-0050



Shown lit



18-PC ASSORTMENT
89780-18-00261



LED Lighted Trees

11" T (S), 12" T (M), 14" T (L) • PLASTIC • TREES LIGHT UP • ON/OFF SWITCH • 3 AA BATTERIES NOT INCLUDED



Twigs & Berries Tree
w/ LED - Small 11" T
89781-6-0080



Twigs & Berries Tree
w/ LED - Medium 12" T
89782-6-0090



Twigs & Berries Tree
w/ LED - Large 14" T
89783-6-0001



Shown lit

Glass Trees with Ornaments

10" T • GLASS • INCLUDES 12-16 ASSORTED COLORED ORNAMENTS



10" TALL



Gold Glitter w/ 16 Matte Ornaments Gold Accents
89901-4-0070



Silver Glitter w/ 16 Glossy Ornaments Silver Accents
89902-4-0070



Glass Tree - 12 Vintage Ornaments
89919-4-0001



Glass Trees with Lights and Ornaments

10" T • GLASS • INCLUDES 12 ASSORTED COLORED ORNAMENTS AND MULTI COLORED LIGHTS • ON/OFF SWITCH • 3 AAA BATTERIES REQUIRED NOT INCLUDED •



10" TALL



**LED Glass Tree -
12 Winter White
Ornaments**
89914-4-0080



**LED Glass Tree - 12
Multi Color Scroll
Ornaments**
89915-4-0080



10" TALL



**LED Glass Tree
- 12 Multi Color
Ornaments**
89916-4-0080



**LED Glass Tree - 12
Candy Stripe
Ornaments**
89918-4-0080



Small Glass Tree with Ornaments

8.25" X 3" BASE TALL • GLASS • INCLUDES ASSORTED ORNAMENTS



Evergreen Tree w/
Glass Bird Ornaments

89911-2-0001



Stocking Gift Card Holders Set

FABRIC • PLASTIC • 6 DESIGNS • ACETATE GIFT BOX • \$3.00 PER 6PC BOX (50¢ PER STOCKING)



6 PCS PER BOX
89798-12-0030



*Packaged Together
in a Gift Box
With Acetate Lid*



5 PC Holiday Kitchen Set

COTTON • INCLUDES APRON (24" X 33.5"), OVEN MITT (7" X 12"),
POT HOLDER (7" X 7") & 2 TOWELS (16" X 27.5")



Gift Packed

Patchwork
89851-2-0521



8 09048 89851 4



Gift Packed



*Towels Include
Hanging Loop
for Drying*

Reindeer
89852-2-0521



8 09048 89852 1

3 PC Holiday Baskets

CANVAS WITH EVA FOAM AND POLYESTER INNER LINER
 35 X 26 X 17 L • 32 X 23 X 16 M • 28 X 20 X 15 S



Stripes

89830-2-0081



Trees/Stripes

89831-2-0081



Trees/Plaid

89841-2-0081



Spooky

79040-2-0081





Felt Gift Bags/Baskets

DACRON/COTTON



6.30" X 3.15" X 6.30" - SM
8.66" X 4.33" X 8.27" - LG

Santa Felt Gift Bag - Set of 2
89602-4-0050



8 09048 89602 2

6.10" X 3.54" X 14.17"

Felt Wine Gift Bag - Set of 2
89601-4-0050



8 09048 89601 5



7.48" X 5.31" X 7.48" - SM
8.66" X 4.72" X 6.10" - LG

Sleigh Felt Gift Bag - Set of 2
89603-4-0050



8 09048 89603 9



10.04" X 10.04" X 4.92"

Santa/Snowman Felt Basket - Set of 2
89604-4-0050



8 09048 89604 6



5.51" X 5.51" X 4.33" - SM
6.69" X 6.69" X 5.12" - LG

Snowman Felt Basket - Set of 2
89605-4-0050



8 09048 89605 3



Buffalo Check Tunic

34"-L-S M/35"-L XL/36" 1X • 100% COTTON

6-PC ASSORTMENT

66560-6-00501



Red Buffalo Check

66561-2-0571 - S/M 34"L



66562-2-0571 - L/XL 35"L



66563-2-0571 - 1X 36"L



White Buffalo Check

66564-2-0571 - S/M 34"L



66565-2-0571 - L/XL 35"L



66566-2-0571 - 1X 36"L





Buffalo Check Wrap with Pockets

43" X 59" • 100% ACRYLIC



Red/Navy
62219-2-0551



Buffalo Check Reversible Blanket Shrug

37" X 73" • 100% ACRYLIC



Black/Red
65143-2-0541



Black/White
65144-2-0541



Turtleneck Boucle Plaid Poncho

29.52" X 51.2" • ONE SIZE FITS MOST • 100% ACRYLIC

4-PC ASSORTMENT
65100-4-0046

8 09048 65100 3



Red
65101-2-0061

8 09048 65101 0



Black
65104-2-0061

8 09048 65104 1



Latte
65105-2-0061

8 09048 65105 8



Evergreen
65106-2-0061

8 09048 65106 5



Sequin Poncho

36.5"L WITH FRINGE • ONE SIZE FITS MOST • 100% ACRYLIC/SEQUINS

3-PC ASSORTMENT
65230-3-0564

8 09048 65230 7



Mocha
65231-2-0551

8 09048 65231 4



Claret
65232-2-0551

8 09048 65232 1



Vanilla
65233-2-0551

8 09048 65233 8



*Sequin
Close
Up*



4-PC ASSORTMENT

65190-4-0046



Plaid Cape/Ponchos

8.27" ARMHOLE; 14.96" NECK; 19.69" SHOULDER LENGTH; 24.8" HEM
50% COTTON • 50% POLYESTER • ONE SIZE FITS MOST



Coffee

65191-2-0061



Pumpkin

65192-2-0061



Red

65193-2-0061



Cypress

65194-2-0061



Scarf Blankets

25.6" X 70.8" • 100% ACRYLIC



Teal Plaid
62201-3-0580

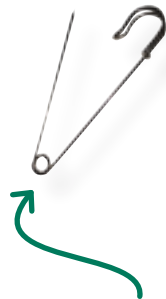


Garnet Plaid
62202-3-0580



Reversible Shawls

33" X 67" • 2.75" - PIN • 100% ACRYLIC



Pin Included
(2.75")

Red Plaid
65061-2-0011





18-PC ASSORTMENT
64280-18-00711

8 09048 64280 3

Scarf Blankets

57" X 57" • 100% ACRYLIC



Hunter Tartan Plaid
64281-3-0560

8 09048 64281 0



Red Tartan Plaid
64282-3-0560

8 09048 64282 7



Woodland Tartan Plaid
64283-3-0560

8 09048 64283 4



Teal Tartan Plaid
64284-3-0560

8 09048 64284 1



Ash Tartan Plaid
64285-3-0560

8 09048 64285 8



Navy Tartan Plaid
64286-3-0560

8 09048 64286 5

Faux Fur Scarf, Hat, Glove Set

7.87" X 11.81" HAT • 3.75" X 7.87" GLOVES • 11.81" X 59" SCARF
100% ACRYLIC • FAUX FUR TRIM



Oatmeal
61174-1-0552

8 09048 61174 8

GIFT
PACKAGED
WITH
RIBBON



Black
61175-1-0552

8 09048 61175 5





Faux Fur Pom Pom Scarf & Hat Sets

7.8" X 9.8" - HAT / 7.78" X 66.9" SCARF • 100% ACRYLIC



Wine

61178-2-0001



8 09048 61178 6



White

61179-2-0001



8 09048 61179 3

Faux Fur Texting Gloves

ONE SIZE FITS MOST • 90% POLYESTER • 10% FAUX RABBIT HAIR

18-PC ASSORTMENT

3 OF EACH COLOR

61120-18-0018

8 09048 61120 5



Black
61121-6-0540

8 09048 61121 2



Caramel
61122-6-0540

8 09048 61122 9



Gray
61123-6-0540

8 09048 61123 6



Cranberry
61124-6-0540

8 09048 61124 3



Navy
61125-6-0540

8 09048 61125 0



Chocolate
61126-6-0540

8 09048 61126 7






9-PC ASSORTMENT
61680-9-0594


 8 09048 61680 4


Cable Knit Bow Fingerless Gloves

3.15" X 8.66" • ONE SIZE FITS MOST • 65% ACRYLIC/35% WOOL



Taupe
 61681-6-0550

 8 09048 61681 1

Gray
 61682-6-0550

 8 09048 61682 8


Black
 61683-6-0550

 8 09048 61683 5




Rhinestone Arm Warmers

ONE SIZE FITS MOST • 75% COTTON • 25% SPANDEX • RUFFLED EDGES • RHINESTONE ACCENTS



Black
 61191-6-0530

 8 09048 61191 5

Purple
 61192-6-0530

 8 09048 61192 2

Jeweled Fingerless Gloves

ONE SIZE FITS MOST • 100% ACRYLIC

12-PC ASSORTMENT
61660-12-0066



Slate
61661-4-0550



Red
61662-4-0550



Black
61663-4-0550



Cable Knit Arm Warmers

ONE SIZE FITS MOST • 100% ACRYLIC

9-PC ASSORTMENT
61670-9-0063



Red
61671-3-0040



Gray
61672-3-0040



Black
61673-3-0040



15-PC ASSORTMENT
68150-15-0057



Rhinestone Knit Headbands

3.5" X 9" • ONE SIZE FITS MOST • 100% POLYESTER • RHINESTONE APPLIQUE



Cranberry
68151-3-0050



Onyx
68152-3-0050



Pewter
68153-3-0050



Chocolate
68154-3-0050



Ivory
68155-3-0050



Pom Pom Hats

5.12" DIA • 100% POLYESTER

12-PC ASSORTMENT

67230-12-0006



Rust

67231-3-0050



Camel

67233-3-0050



Denim

67234-3-0050



Winter White

67235-3-0050



*Wear
Cuffed or
Slouchy!*





12-PC ASSORTMENT
67300-12-0006

8 09048 99469 8

Toddler Owl Knit Hats

ONE SIZE FITS MOST • 100% POLYESTER • HAND KNIT



Pink/Lime
67301-3-0050

8 09048 67301 2



Blue/Black
67302-3-0050

8 09048 67302 9



Gold/Black
67303-3-0050

8 09048 67303 6



Toddler Mouse Knit Hats

ONE SIZE FITS MOST • 100% POLYESTER • HAND KNIT



Gray/White
67304-3-0050

8 09048 67304 3

Pig-E Pals 3D Kids Slipper Gripper Socks

FOR AGES 6-10 • 3D CHARACTERS • 8 DESIGNS • 95% ACRYLIC/5% POLYESTER

16-PC ASSORTMENT
89020-16-0008

8 09048 89020 4



Snowman
89021-4-0050

8 09048 89021 1



Santa
89023-4-0050

8 09048 89023 5



Polar Bear
89022-4-0050

8 09048 89022 8



Peggable
Packaging



Penguin
89024-4-0050

8 09048 89024 2



Owl
89025-4-0050

8 09048 89025 9



Frog
89026-4-0050

8 09048 89026 6



Cat
89027-4-0050

8 09048 89027 3



Monkey
89028-4-0050

8 09048 89028 0

12-PC ASSORTMENT
89030-1-0084



Pig-E Pals Toddler Socks

AGES 2-5 TODDLER •
3 DESIGNS-SANTA, SNOWMAN, REINDEER
GIFT BOXED • \$4.00 EACH
95% POLYESTER/2% SPANDEX



Gift Boxed





Multi Pattern Socks

9.45" X 11.02" • ONE SIZE FITS MOST • 98% POLYESTER • 2% SPANDEX

30-PC ASSORTMENT
60330-30-0021



Plum Heel
60331-6-0040



Black Heel
60332-6-0040



Navy Heel
60333-6-0040



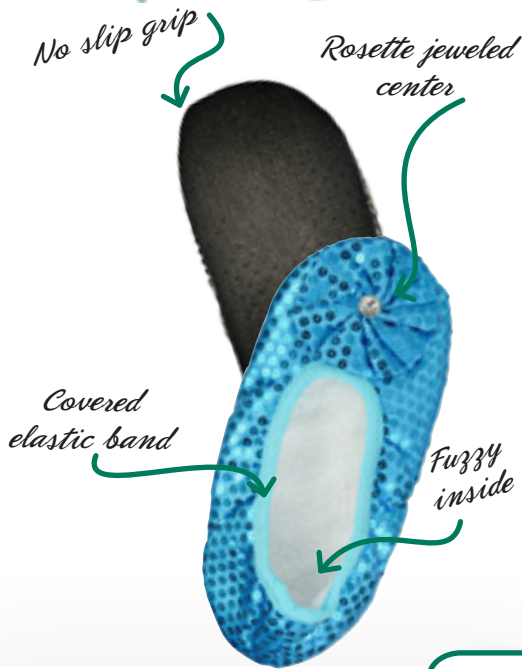
Orange Heel
60334-6-0040



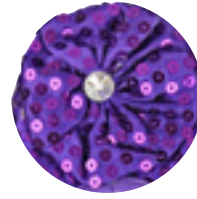
Purple Heel
60335-6-0040



SEQUIN FUZZY FOOTIES



Pink
60152-3-0050 - S/M
8 09048 60152 7



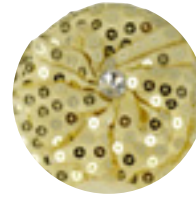
Purple
60154-3-0050 - S/M
8 09048 60154 1
60164-3-0050 - L/XL
8 09048 60164 0



Fuchsia
60155-3-0050 - S/M
8 09048 60155 8
60165-3-0050 - L/XL
8 09048 60165 7



Blue
60156-3-0050 - S/M
8 09048 60156 5
60166-3-0050 - L/XL
8 09048 60166 4



Gold
60157-3-0050 - S/M
8 09048 60157 2
60167-3-0050 - L/XL
8 09048 60167 1



Silver
60168-3-0050 - L/XL
8 09048 60168 8

18-PC ASSORTMENT
60180-18-0027



Nubbie Fuzzy Footies

ONE SIZE FITS MOST • 98% POLYESTER/2% SPANDEX • MACHINE WASHABLE

No slip grip bottoms!



Light Blue
60181-6-0040
8 09048 60181 7



Pink
60182-6-0040
8 09048 60182 4



Peach
60183-6-0040
8 09048 60183 1

Fuzzy Footies

ONE SIZE FITS MOST • 97% POLYESTER • 3% SPANDEX



FEATURES

- COMFY & COZY
- SLIP RESISTANT BOTTOMS
- GOOD FOR TRAVEL

10 Classic Colors

BLUE/GREEN/PURPLE • RED • PINK • PURPLE • CHOCOLATE • BLACK • PURPLE/RED/VIOLET • BLUE/TEAL/LT BLUE • PINK/WHITE/PEACH • GRAY/BLACK/WHITE • PLEASE SPECIFY IF YOU NEED 09923 OR 09924 DISPLAY (AT NO CHARGE)

60-PC ASSORTMENT
60000-60-00582



60-PC ASSORTMENT
60000-NW-00582



10 Multi Colors

• PLEASE SPECIFY IF YOU NEED 09923 OR 09924 DISPLAY (AT NO CHARGE)

20 Colors

• PLEASE SPECIFY IF YOU NEED 09928 DISPLAY (AT NO CHARGE) OR 09931 DISPLAY IF PURCHASING 240 PCS

120-PC ASSORTMENT
60000-120-00075



Point of Purchase Display

* 09923 DISPLAY INCLUDED

12.5"D X 18.5"T X 18.75"W

09923 DISPLAY INCLUDED WITH 48 PC ASSORTMENT



48-PC ASSORTMENT
60000-PD-00822



SHOWN WITH HEADER CARD.

Fuzzy Footies Countertop Display

18"DIA X 27"T • HOLDS 48 PCS

09924-1-0004



Fuzzy Footies Floor Display

18"DIA X 81"T • HOLDS 120 PCS

09928-1-0005



Fuzzy Footies Grid Display

24"W X 78"T • 50 HOOKS INCLUDED • HOLDS 240 PCS • (SIZE DOES NOT INCLUDE HEADER CARD) HEADER CARD INCLUDED

09931-1-0006





No slip grip bottoms!



Fuzzy Footies

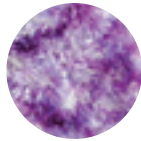
ONE SIZE FITS MOST • 97% POLYESTER/3% SPANDEX

FEATURES

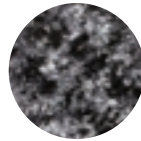
- COMFY & COZY
- SLIP RESISTANT BOTTOMS
- GREAT FOR TRAVEL
- WASHABLE



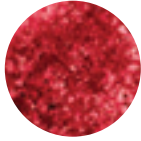
Blue/Green/Purple
60001-6-5740



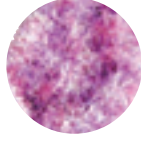
Lavender/White
60015-6-5740



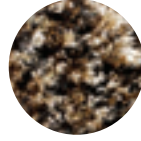
Gray/Black/White
60035-6-5740



Red
60004-6-5740



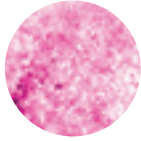
Fuchsia/Pink/White
60016-6-5740



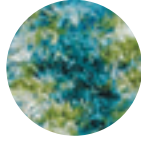
Camel/Black
60036-6-5740



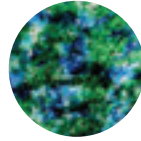
Teal/Navy/Fuchsia
60070-6-5740



Pink
60005-6-5740



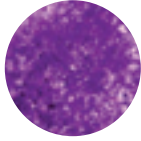
Lt Blue/Lt Green/White
60023-6-5740



Green/Blue/White
60037-6-5740



Green/Pink/White
60071-6-5740



Purple
60006-6-5740



Dk Purple/Pink/Purple
60025-6-5740



Bright Pink
60039-6-5740



White/Pink/Gray
60072-6-5740



Chocolate
60007-6-5740



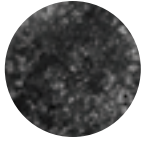
Purple/Black
60026-6-5740



Gray/Blush/White
60056-6-5740



Blue/Pink/Purple
60073-6-5740



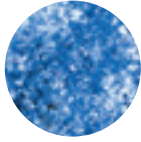
Black
60008-6-5740



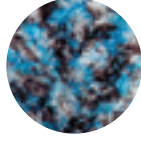
Fuchsia/Black
60027-6-5740



Purple/Green/Pink
60064-6-5740



Blue/Teal/Light Blue
60010-6-5740



Brown/White/Turquoise
60028-6-5740



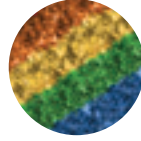
Blue/Orange/Yellow
60066-6-5740



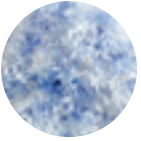
Red/Magenta/Pink
60011-6-5740



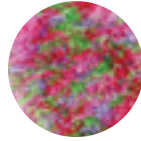
Blue/Navy/Teal
60031-6-5740



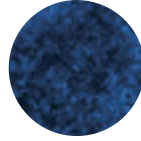
Med Adult Rainbow
60098-6-5740



Powder Blue/White
60014-6-5740



Green/Purple/Lt Pink/Pink
60034-6-5740



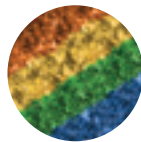
Navy
60075-6-5740



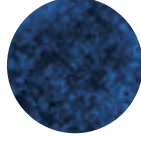
White/Blue/Pink
60074-6-5740



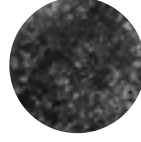
Kids! APPROX. AGE: 5-9



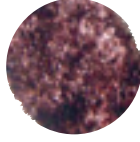
Kids Rainbow
60097-6-0040



Navy
60131-6-0050



Black
60132-6-0050



Chocolate
60133-6-0050



HOLIDAY ORNAMENT ASSORTMENT

Free Fixture Included!

\$3.20 PER ORNAMENT

Ornament Assortment

96-PC ASSORTMENT

99800-96-00703



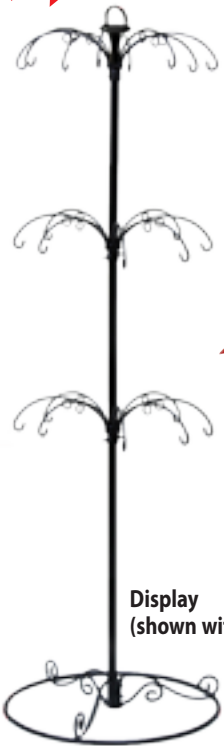
8 09048 99800 9

\$307.00

Includes:

- 09917 - Floor Display (1)
- 89791 - Assorted LED Light Up Nose Ornaments 12pc (2)
- 89792 - Assorted LED Light Up Ornaments 12pc (2)
- 89793 - Assorted Light Up Glass Ball Ornaments 12pc (2)
- 89794 - Assorted Shimmering Snowman Ornaments 12pc (2)

**FREE
FIXTURE**



Display
(shown without product)



Just for the Fun of It!

Come See Us at our Permanent Showrooms:

City	Location	Showroom #, Name
Atlanta	AmericasMart Building 2 17th Floor	Suite 1718, 225 Unlimited
Columbus	Columbus Marketplace	#A14, McGowan
Dallas	Dallas Market Center	#2040, 3 Gentrys
Denver	Denver Merchandise Mart	1229, United Giftware Sales
Las Vegas	World Market Center	Building C, Suite C-0891, Next Step Reps
Minneapolis	Minneapolis Mart	Green 465, BPA Sales
Seattle	Seattle Mart	#105, DandyLines

Terms & Conditions

New Account Policy

Net 30 days- Submit a completed and signed Red Carpet Studios credit application or send us your own credit reference sheet. Notice: Net Credit Term accounts that pay by credit card will incur an additional 3% fee. Credit subject to approval. Past due accounts are subject to a 1½% per month finance charge. Accounts will be assessed collection and/or attorney fees as required to obtain payment.

Credit Card- We accept Visa, MasterCard and American Express (no Discover Card). Required information at time of order includes credit card number, expiration date, cardholder name and signature, security code (CVV code), card billing address and zip code. Credit/debit card payments do not qualify for the prepaid reduced freight. There may be occasions when a card imprint will be necessary. Red Carpet Studios must know if the card to be used is credit or debit.

Prepaid- Prepaid payment must be received 10 days prior to ship date for total amount of the order plus 18% to cover shipping (Ground shipments within the Continental US only). Credit card payments are not considered prepaid. The check or an ACH payment for the full amount must accompany your order. COD not accepted.

Minimums: Opening orders and all reorders require a minimum of \$150.00. Red Carpet Studios reserves the right to increase quantities to meet published minimums. Special Care has been taken in the packaging of these items to protect them from breakage. In order to maintain the integrity of this packaging, all items must be ordered in multiples of the required minimum quantity. For example, #66321 must be ordered in multiples of two.

Return Policy: All returns and deductions must have an authorization number, which will be supplied to you by Red Carpet Studios customer service department. In order to receive credit for damages or defective items we must receive notice within 10 days after receipt of goods. Any merchandise returned to Red Carpet Studios without approval is subject to a 15% restocking fee. Absolutely no guaranteed sales. Credit for returns is the sole discretion of Red Carpet Studios, Ltd. Exceptions to the above stated terms must be approved and confirmed in writing by Red Carpet Studios management. Approved claims for credit will apply to future orders.

Shipping Terms: Shipments are FOB Loveland, Ohio. FedEx Ground is the RCS preferred freight carrier within Continental United States. RCS will use its best efforts to obtain the lowest shipping rates available.

F.O.B.: Title to your order passes to you as Freight on Board (FOB) at the Red Carpet warehouse dock in Loveland, Ohio. You accept responsibility for the shipment at this time. You are responsible for the freight to ship the order to you and the cost of insurance covering damage during shipment. The event of taking title to the items you have ordered at this time entitles you to inspect the goods, choose insurance coverage and choose the freight carrier and method of payment for the freight carrier. You must include with your placement of the sales order instructions as to how Red Carpet may assist you in the delivery of your order. **Customers are responsible for any inside or residential delivery charges and for any lift gate charges. Customers are also responsible for any charges made by freight carriers for multiple delivery attempts, re-delivery or re-routing.**

Freight Cap. Currently, RCS offers a 15% freight cap on orders exceeding \$500.00 of invoiced merchandise at the wholesale value (no other discounts or promotions apply). Freight cap does not apply to oversized products (noted in our catalog). Contact your local sales rep or RCS customer service for more details. Orders exceeding \$1,500 of invoiced merchandise, oversized items are included in the freight cap program. Freight cap orders must ship to one location. Valid only throughout the continental United States. RCS may amend or cancel this program at any time

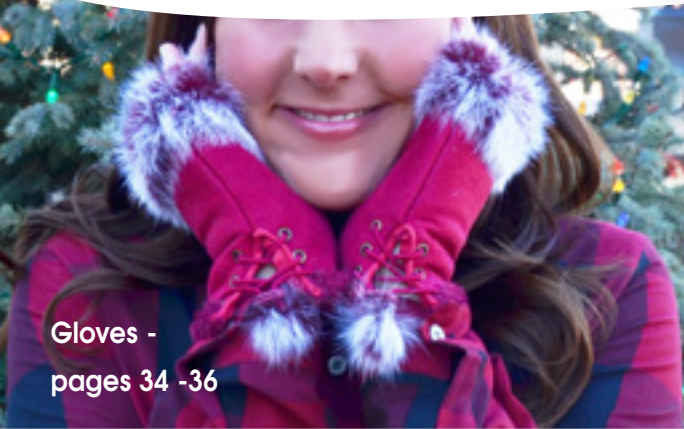
Price \$5.00



Red Carpet Studios, Ltd.
107 Northeast Drive
Loveland, Ohio 45140

Local 1-513-774-1600
Toll Free 1-877-985-0405
Fax 1-513-774-1601
email mail@rcsgifts.com

PRSR STD
U.S. POSTAGE
PAID
CINCINNATI, OH
PERMIT NO. 6657



Gloves -
pages 34 -36



Scarves/Shawls -
pages 30-31



Military Gnome -
page 4