

RED CARPET STUDIOS LTD • SPRING 2017

*Fashion Accessories and Apparel*





# Here's the Skinny on *Skinny Scarves*



Pages 22-24



RCS Gifts transforms how to wear a scarf with a runway fresh, retro vibe in skinny scarves. Tie this slim, sleek style in a bow. Wear loosely with ends dangling, or knot like a tie. With prints in florals, paisley, stripes, dots and faux suede RCS Gifts is on trend.

## Stop by Our Showrooms!

Atlanta - 225 Unlimited  
Americas Mart • Building 2 • 17th Floor • Suite 1718

Columbus - McGowan  
Columbus Marketplace • #A14

Dallas - 3 Gentrys  
Dallas Market Center • #2040

Denver - United Giftware Sales Group  
Denver Merchandise Mart • 1229

Las Vegas - Next Step Reps  
World Market Center • Building C • Suite C-0891

Minneapolis - BPA Sales  
Minneapolis Mart • Green 465

Seattle - Dandyline  
Seattlemart • #105

Visit Our Website!  
[www.rcsgifts.com](http://www.rcsgifts.com)

Order Toll Free 1.877.985.0405 • Fax 1.513.774.1601

Visit our website or call to receive a complete catalog to see all styles of fashion and giftware RCS offers.

# Batik Ruffle Sleeve Dresses

4-PC ASSORTMENT  
66760-4-0027



32.28" L S/M; 34.65" L L/XL • 100% COTTON •  
WEAR ON OR OFF SHOULDER • LOOSE FIT • LEFT SIDE POCKET •  
MADE IN INDIA



*Wear  
off shoulder  
or  
on shoulder*

**Denim**  
66761-2-0081 - S/M



66762-2-0081 - L/XL



**Floral Batik**  
66763-2-0081 - S/M



66764-2-0081 - L/XL



*Left  
side  
pocket!*

4-PC ASSORTMENT  
66790-4-0085



## Batik Tunics

31.5" L S/M; 33.86" L L/X •  
100% COTTON • LOOSE FIT •  
MADE IN INDIA

INDIGO BATIK



**Pencil Batik**  
66791-2-0541 - S/M



66792-2-0541 - L/XL



**Floral Batik**  
66793-2-0541 - S/M



66794-2-0541 - L/XL



# Batik Crossbody Bags

8" BAG/24" STRAP • 100% COTTON • TASSLE DETAIL ZIPPER • MADE IN INDIA

9-PC ASSORTMENT  
**60460-9-0504**



**Pencil Batik**  
60461-3-0540



**Diamond Batik**  
60462-3-0540



**Floral Batik**  
60463-3-0540



# Pom Pom Scarf

12" X 60" • 100% COTTON • TASSLES • MADE IN INDIA



**Indigo**  
64441-3-0550



*So many fun ways to show off your tassles!*



## Denim Vest

23.03"L S/M; 25.19"L L/X • 100% COTTON

## Batik Skirt

14.17"L RELAXED WAIST/18.11"L FROM SIDE •  
100% COTTON •  
FAUX DRAWSTRING/ELASTIC BAND •  
ONE SIZE FITS MOST • MADE IN INDIA



**Drawstring Skirt -  
Floral Batik**  
66773-2-0021



**Sleeveless Denim Vest**  
65321-2-0051 - S/M



65322-2-0051 - L/XL



### 4-PC ASSORTMENT 66720-4-0003



## Batik Shorts

12.4"L RELAXED WAIST/13.58"L FROM SIDE S/M •  
13.97"L RELAXED WAIST/15.94"L FROM SIDE L/XL •  
ELASTICWAIST • 100% COTTON • MADE IN INDIA



**Pencil Batik**  
66723-2-0570 - S/M



66724-2-0570 - L/XL



**Diamond Batik**  
66721-2-0570 - S/M



66722-2-0570 - L/XL



# Embroidered Shrugs

39.37" X 71" • 100% COTTON • EMBROIDERED DETAILING • ONE SIZE FITS MOST • MADE IN INDIA



*Embroidered detailing!*



**Paisley Pastel Multi**  
67371-2-0051



**Paisley Bright Multi**  
67372-2-0051



# Scarf Vest

31" X 71" • 100% POLYESTER • ONE SIZE FITS MOST



**Pink**  
67451-2-0501



*Wear as a vest or scarf!*



**Navy**  
67452-2-0501





3-PC ASSORTMENT  
67380-3-0054



# Embroidered Vine Shrugs

39.37" X 71" • 100% COTTON •  
ONE SIZE FITS MOST •  
MADE IN INDIA

EMBROIDERED



**Fuchsia**  
67381-2-0051



**Peacock Blue**  
67382-2-0051



*Embroidered  
detailing!*

**Navy**  
67383-2-0051



# Lace Trim Shrugs

32.5" X 68" • 100% POLYESTER • ONE SIZE FITS MOST

5-PC ASSORTMENT

67400-5-0526



SHRUGS



**Banana/Pink**  
67401-2-0521



**Cherry**  
67404-2-0521



**Violet**  
67405-2-0521



**Peach**  
67406-2-0521



**Honeydew**  
67407-2-0521





3-PC ASSORTMENT  
67390-3-0522



## Sheer Shrugs

43.31" X 70.86" • 100% POLYESTER • ONE SIZE FITS MOST



Dusty Rose  
67391-2-0570



Dusty Aqua  
67392-2-0570



Black  
67393-2-0570



SHRUGS / SHAWLS



3-PC ASSORTMENT  
67480-3-0543



## Side Button Shawls

42.5" X 54.2" • 100% ACRYLIC • ONE SIZE FITS MOST



Taupe  
67481-2-0511



Black  
67482-2-0511



Navy  
67483-2-0511



Side button detail!

# Jacquard Shawls

27.5" X 71" • 50% VISCOSE/ 50% POLYESTER  
(62531 & 62532)  
30" X 72" • 100% VISCOSE  
(62621, 62622, & 62623)



**Orchid Paisley**  
62531-3-0070



**Wild Rose Paisley**  
62532-3-0070



**Black Mixed Pattern**  
62621-3-0590



**Grape Mixed Pattern**  
62622-3-0590



**Fiesta Mixed Pattern**  
62623-3-0590



# Floral Kimonos

39" X 57" • 100% CHIFFON • ONE SIZE FITS MOST  
MATCHING SKINNY SCARVES ON PAGE 24

3-PC ASSORTMENT  
67490-3-0522



Pair with  
one of our  
Skinny  
Scarves  
on pages  
22-24



**Seafoam**  
67491-2-0570



**Navy**  
67492-2-0570



**Shell Pink**  
67493-2-0570



# Paisley Bandana Kimonos

26.97" X 47.64" • 100% CHIFFON • ONE SIZE FITS MOST



**Coral**  
67471-2-0511



**Mint**  
67472-2-0511



# Fringe Kimonos

5-PC ASSORTMENT  
67420-5-0065

100% POLYESTER • ONE SIZE FITS MOST • DROP SHOULDER • LOOSE FIT  
\*\*\*INCLUDES 1 OF EACH STYLE



28.5" L (BACK) - CROCHET TRIM (67421, 67422)  
34" L (BACK) - FREE FIT FRINGE (67442)  
33" L (BACK) - FRINGED SLEEVE (67411, 67412)



**Floral Border**  
67421-2-0011



**Cherry Blossom**  
67422-2-0011



**Ditzy Floral**  
67442-2-0090



**Multi Floral**  
67411-2-0521



**Poppy**  
67412-2-0521





**6-PC ASSORTMENT  
67430-6-00801\*\*\***



**Crochet Vests**

60% POLYESTER/40% COTTON • CROCHET ACCENTS

\*\*\* INCLUDES 1 OF EACH SIZE AND COLOR (67431, 67432, 67433, 67434, 66547, 66548)



**White**  
67431-2-0081 - S/M



67432-2-0081 - L/XL



**Black**  
67433-2-0081 - S/M



67434-2-0081 - L/XL



**Olive**  
66547-2-0081 - S/M



66548-2-0081 - L/XL



CROCHET VESTS/TUNICS



**6-PC ASSORTMENT  
66520-6-0099\*\*\***



**Crochet Tunics**

60% POLYESTER/40% COTTON • CROCHET ACCENTS

\*\*\* INCLUDES 1 OF EACH STYLE (66521, 66522, 66524, 66525, 66527, 66528)



**Ivory**  
66521-2-0561 - S/M



66522-2-0561 - L/XL



**Black**  
66524-2-0561 - S/M



66525-2-0561 - L/XL



**Olive**  
66527-2-0561 - S/M



66528-2-0561 - L/XL



# Lace Tunics

100% COTTON



**Ivory**

66460-2-0571 - L/XL



**Black**

66462-2-0571 - S/M



# Embroidered Fringe Poncho

100% COTTON

\*\*\* INCLUDES 1 OF EACH SIZE

4-PC ASSORTMENT  
**66390-4-0005 \*\*\***



**White**

66391-2-0521 - S/M



66392-2-0521 - L/XL



**Black**

66394-2-0521 - S/M



66395-2-0521 - L/XL





4-PC ASSORTMENT  
66540-4-0045 \*\*\*



# Zipper Back Lace Tunic

\*\*\* INCLUDES 1 OF EACH SIZE

100% POLYESTER

LACE TUNIC



*Zipper  
back!*



**White**  
66541-2-0531 - S/M



66542-2-0531 - L/XL



**Black**  
66544-2-0531 - S/M



66545-2-0531 - L/XL



# Lace Skirts

ONE SIZE FITS MOST • 100% COTTON WITH POLY CHIFFON LINING AND ELASTIC WAISTBAND

\*\*\* INCLUDES 1 OF EACH

4-PC ASSORTMENT  
66400-4-0025 \*\*\*



**Ivory**  
66401-2-0031



**Black**  
66402-2-0031



**Indigo**  
66403-2-0031



**Taupe**  
66404-2-0031





3-PC ASSORTMENT  
66470-3-0525 \*\*\*



ONE SIZE FITS MOST • 100% COTTON • ELASTIC WAISTBAND  
\*\*\* INCLUDES 1 OF EACH

# Lace Trim Skirts

LACE SKIRTS



**White**  
66471-2-0571



**Blue**  
66472-2-0571



**Black**  
66473-2-0571



# Lace Shorts

70% POLYESTER/30% COTTON • ELASTIC WAISTBAND



**Ivory**

66502-2-0521 - L/XL



**Black**

66503-2-0521 - S/M



66504-2-0521 - L/XL



# Embroidered Shorts

100% COTTON • EMBROIDERED ACCENTS



**Blue Butterfly**

66702-2-0001 - L/XL



66703-2-0001 - 1X



**Flower Trim Black**

66732-2-0001 - L/XL



**White Floral**

66711-2-0001 - S/M



66712-2-0001 - L/XL



66713-2-0001 - 1X



**Flower Trim Blue**

66742-2-0001 - L/XL



6-PC ASSORTMENT  
66530-6-0009 \*\*\*



\*\*\* INCLUDES 1 OF EACH SIZE

# Rompers

100% POLYESTER • REMOVABLE TIE BELT

ROMPERS



**Chevron**  
66531-2-0051 - S/M



66532-2-0051 - L/XL



**Polka Dot**  
66533-2-0051 - S/M



66534-2-0051 - L/XL



**Black**  
66535-2-0051 - S/M



66536-2-0051 - L/XL



# Fun Ways to Wear a Skinny Scarf

ADD SOME FLAIR TO A SIMPLE DRESS, WEAR WITH YOUR FAVORITE JACKET, TRY ONE IN YOUR HAIR OR AS A BELT! SO MANY STYLES AND WAYS TO WEAR!



## Black and White Skinny Scarves

2.56" X 71" • 100% POLYESTER



**Dot**  
64522-3-0030



**Stripe**  
64523-3-0030





*Wear a  
Skinny Scarf  
as a  
headband!*

## Ditzy Skinny Scarves

2.56" X 71" • 100% POLYESTER

SKINNY SCARVES



**Pink**  
64501-3-0030



**Black**  
64502-3-0030



9-PC ASSORTMENT  
**64510-9-0072**



## Faux Suede Skinny Scarves

2.56" X 71" (INCLUDING FRINGE) • 100% POLYESTER



**Blush**  
64511-3-0030



**Cream**  
64512-3-0030



**Black**  
64513-3-0030



# Paisley Skinny Scarves

2.56" X 71" • 100% VISCOSE

9-PC ASSORTMENT

64530-9-0072



*Pair with one of our Shrugs on pages 8-11*



**Purple**  
64531-3-0030



**Turquoise**  
64532-3-0030



**Navy**  
64533-3-0030



# Floral Skinny Scarves

2.56" X 70.87" • 100% CHIFFON •  
MATCHING KIMONOS ON PAGE 13

9-PC ASSORTMENT

64540-9-0072



**Seafoam**  
64541-3-0030



**Navy**  
64542-3-0030



**Shell Pink**  
64543-3-0030







12-PC ASSORTMENT  
62300-12-0045



## Polka Dot

28" X 31.5" • 100% POLYESTER

INFINITY SCARVES



**Light Blue**  
62301-3-0540



**Navy**  
62302-3-0540



**Black**  
62303-3-0540



**Coral**  
62304-3-0540



12-PC ASSORTMENT  
62390-12-0027



## Lace Trim

63" X 22" • 80% POLYESTER • 20% COTTON



**Cotton Candy**  
62391-3-0060



**Bubble Gum**  
62392-3-0060



**Denim**  
62393-3-0060



**Peach**  
62394-3-0060



# Crochet Inset

63" X 28" • 60% POLYESTER/40% COTTON

12-PC ASSORTMENT

62380-12-0009



**Misty**  
62381-3-0570



**Black**  
62382-3-0570



**Coral**  
62383-3-0570



**Pearl**  
62384-3-0570



# Mini Sequin

20" X 30" • 100% VISCOSE

12-PC ASSORTMENT

62710-12-0027



**Stone**  
62711-3-0060



**Honey Dew**  
62712-3-0060



**Lilac**  
62713-3-0060



**Sand Dollar**  
62714-3-0060





9-PC ASSORTMENT  
62310-9-0045



## Tropical Print

27.5" X 71" • 100% POLYESTER

INFINITY SCARVES



**Nectarine**

62311-3-0060



**Pineapple**

62312-3-0060



**Citrus**

62313-3-0060



9-PC ASSORTMENT  
62430-9-0036



## Ombré

72" X 20" • 100% VISCOSE



**Hyacinth**

62431-3-0070



**Tulip**

62432-3-0070



**Tiger Lily**

62433-3-0070



# Chevron

19" X 62" • 100% VISCOSE

9-PC ASSORTMENT  
62360-9-0054



**Mint**

62361-3-0050



**Grape**

62362-3-0050



**Black**

62363-3-0050



# Ombre Textured Infinity

23" X 68" • 100% POLYESTER

9-PC ASSORTMENT  
64040-9-0504



**Granite Gray**  
64041-3-0540



**French Blue**  
64042-3-0540



**Sprucestone**  
64043-3-0540





15-PC ASSORTMENT  
62670-15-00051



# Infinity Fringe

16" X 35" • 100% VISCOSE

INFINITY SCARVES



**Orange/Pink**  
62671-3-0001



**White/Black**  
62672-3-0001



**Turquoise/Lime**  
62673-3-0001



**Chocolate/Ivory**  
62675-3-0001



**Purple/Grape**  
62676-3-0001



## Tribal Infinity

31" X 17" • 100% POLYESTER

## Rouged Infinity

65" X 13" • 100% POLYESTER



**Wind**  
62322-3-0540



**Earth**  
62323-3-0540



**Banana**  
62351-3-0540



# American Flag Infinity

35" X 71" • 100% POLYESTER



**Freedom**  
62497-3-0540



# Stars and Stripes Scarf

39" X 70" • 100% POLYESTER



**Stars and Stripes**  
62499-3-0040



# Abstract Flag Scarves

35" X 71" • 100% POLYESTER

PATRIOTIC



**Colonial Blue**  
62495-3-0050



*Wear as a vest or scarf!*



**Bronze**  
62496-3-0050



# Paris Stamp

35" X 71" • 70% POLYESTER/30% VISCOSE

9-PC ASSORTMENT  
64300-9-0054

8 09048 64300 8

Pattern close up



**Blanc**  
64301-3-0050

8 09048 64301 5



**Dusty Aqua**  
64302-3-0050

8 09048 64302 2



**Pink Icing**  
64303-3-0050

8 09048 64303 9



*Find this  
wristlet  
and  
other  
styles on  
pages  
68-69*

# Bicycle

27.6" X 71" • 65% POLYESTER/35% VISCOSE



**Turquoise**  
64621-3-0050

8 09048 64621 4



**Pink**  
64622-3-0050

8 09048 64622 1







9-PC ASSORTMENT  
64600-9-0054



# Rome

27.6" X 71" • 65% POLYESTER/35% VISCOSE

*Pattern close up*



**Pink**  
64601-3-0050



**Blue**  
64602-3-0050



**White**  
64603-3-0050



SCARVES



# New York

29.6" X 75" • 65% POLYESTER/35% VISCOSE



**Pink** 64611-3-0050



**White**  
64612-3-0050



## Floral Stripe

27.6" X 71" • 65% POLYESTER/35% VISCOSE

9-PC ASSORTMENT  
64630-9-0063

8 09048 64630 6



**Powder Blue**  
64631-3-0040

8 09048 64631 3



**Sweet Lilac**  
64632-3-0040

8 09048 64632 0



**Rose**  
64633-3-0040

8 09048 64633 7

*Pattern  
close  
up*



## Printed Lace

35" X 71" • 100% POLYESTER

9-PC ASSORTMENT  
64370-9-0054

8 09048 64370 1



**Wedgewood Blue**  
64371-3-0050

8 09048 64371 8



**Dusty Rose**  
64372-3-0050

8 09048 64372 5



**White**  
64373-3-0050

8 09048 64373 2



12-PC ASSORTMENT  
64650-12-0027



**Batik**

36.7" X 71" • 100% POLYESTER

SCARVES



**Coral**  
64651-3-0060



**Raspberry**  
64652-3-0060



**Gray**  
64653-3-0060



**Teal**  
64654-3-0060



*Wear as a  
scarf,  
vest,  
or  
infinity scarf*



# Nautical Anchor

29.5" X 71" • 100% VISCOSE

9-PC ASSORTMENT

64410-9-0054



*Pattern close up*



**White**  
64411-3-0050



**Sand**  
64412-3-0050



**Ocean Blue**  
64413-3-0050



# Watercolor

20" X 71" • 100% CHIFFON

# Lace Inset

27.5" X 71" • 100% COTTON VOILE



**Butterfly**  
64422-3-0560



**Lime/Blue**  
64431-3-0070



**Lime/Pink**  
64432-3-0070





# Floral Splash

27.6" X 71" • 80% POLYESTER/20% COTTON

SCARVES

*Pattern close up*



**Dove Gray**  
64641-3-0040



**Honeydew**  
64642-3-0040



# Watercolor Hummingbird

35" X 70" • 100% POLYESTER

*Pattern close up*



**Teal**  
64681-3-0050



**Wine**  
64682-3-0050



# Abstract Stripe

29.5" X 71" • 100% VISCOSE

9-PC ASSORTMENT

64380-9-0054



**Seafoam**

64381-3-0050



**Lemon**

64382-3-0050



**Blush**

64383-3-0050



# Zig Zag

29.5" X 71" • 100% VISCOSE

12-PC ASSORTMENT

64400-12-0006



**Coral Reef**

64401-3-0050



**Banana**

64402-3-0050



**Mint**

64403-3-0050



**White**

64404-3-0050





9-PC ASSORTMENT  
62460-9-0054



## Bold Stripe Linen

63" X 22" • 60% LINEN/40% COTTON

SCARVES



**Meadow**

62461-3-0050



**Wild Rose**

62463-3-0050



**Birch**

62464-3-0050



12-PC ASSORTMENT  
62480-12-0084



## Sheer Chevron

66" X 37" • 100% POLYESTER



**Lime**

62481-3-0040



**Cherry**

62482-3-0040



**Black**

62483-3-0040



**Berry**

62484-3-0040



# Abstract Dots

35" X 71" • 100% POLYESTER

9-PC ASSORTMENT

64390-9-0054



**Sky**

64391-3-0050



**Sage**

64392-3-0050



**Lilac**

64393-3-0050



# Dual Polka Dots

35" X 71" • 70% POLYESTER/30% VISCOSE

9-PC ASSORTMENT

64330-9-0054



**Teal**

64331-3-0050



**Coral**

64332-3-0050



**Navy**

64333-3-0050







# Geo Dot

35" X 70" • 100% POLYESTER

SCARVES



**Dusty Pink**  
64671-3-0050



**Sky Blue**  
64672-3-0050



# Indigo Pom Pom Scarves

12" X 60" • 100% COTTON • TASSLES • MADE IN INDIA



**Indigo**  
64441-3-0550



*So many fun ways to show off your tassles!*

# Hydrangea

35" X 71" • 70% POLYESTER/30% VISCOSE

9-PC ASSORTMENT

64320-9-0054



**Navy**  
64321-3-0050



**Honeydew**  
64322-3-0050



**Peach**  
64323-3-0050



# All Over Mini Daisy

37" X 67" • 100% VISCOSE

12-PC ASSORTMENT

62470-12-0045



**Cream**  
62471-3-0540



**Black**  
62472-3-0540



**Ocean**  
62473-3-0540



**Dove Gray**  
62474-3-0540



12-PC ASSORTMENT  
64350-12-0006



# Printed Floral

27.5" X 71" • 70% POLYESTER/30% VISCOSE

SCARVES



**Powder**  
64351-3-0050



**English Rose**  
64352-3-0050



**Mist**  
64353-3-0050



**White**  
64354-3-0050



# Lace

62" X 8" • 60% POLYESTER/40% COTTON

15-PC ASSORTMENT

63740-15-00021

8 09048 99039 3



**Cream/Ivory**  
63741-3-0080

8 09048 63741 0



**Dusty Pink**  
63742-3-0080

8 09048 63742 7



**Black**  
63744-3-0080

8 09048 63744 1



**Taupe**  
63745-3-0080

8 09048 63745 8



**Lavender**  
63746-3-0080

8 09048 63746 5





9-PC ASSORTMENT  
64310-9-0054



## Bird Print

39" X 71" • 100% POLYESTER

SCARVES



**Vanilla**  
64311-3-0050



**Pale Pink**  
64312-3-0050



**Seafoam**  
64313-3-0050



9-PC ASSORTMENT  
62370-9-0036



## Abstract Bird

69" X 27.5" • 100% ACRYLIC



**Mint**  
62371-3-0070



**Black**  
62372-3-0070



**Pale Pink**  
62373-3-0070



# Shimmering Shades

16" X 67" • 100% POLYESTER

24-PC ASSORTMENT

63430-24-0048



**Blue**  
63431-3-0530



**Purple**  
63432-3-0530



**Black**  
63433-3-0530



**Fuchsia**  
63434-3-0530



**Turquoise**  
63435-3-0530



**Dove Gray**  
63437-3-0530



**Black/White**  
63438-3-0530



**Pink**  
63439-3-0530



# Square Fringe Plaid

43" X 43" • 100% VISCOSE



**Hibiscus**  
62411-3-0070



# Tonal Lurex

24" X 62" • 70% COTTON/30% POLYESTER



**Yellow**  
63772-3-0520



# Sheer Embroidered

17" X 65" • 100% COTTON VOILE



**White**  
63522-3-0050



INFINITYSCARVES

30-PC ASSORTMENT  
69044-30-0057



# Scarf Charms

10 DESIGNS • 3 OF EACH STYLE •  
INCLUDES BODY FORM WITH WHITE PINS • \$2.50 EACH



24" T X 12.5" W



# Mini Massagers

2.95" W X 3.22"L • PLASTIC • METAL • 3 AAA BATTERIES (NOT INCLUDED) • CHARGER (INCLUDED) • 3 COLORS - RED, BLUE BLACK

48-PC ASSORTMENT  
49093-1-00021 \*\*\*



\*\*\* 4 COUNTERTOP DISPLAYS (12 PER BOX); 3 STYLES (4 EACH/DISPLAY)



12.25"L X 9.75"W X 3.25"H  
(10.75"H WITH HEADER)



BLUE



BLACK



RED





# Jazzy Jamzzz™ Loungewear

6-PC ASSORTMENT  
66210-6-00501 \*\*\*



\*\*\* INCLUDES 1 OF EACH SIZE

## Pajama Night Shirts

100% COTTON • COTTON PIPING

JAZZY JAMZZZ™  
LOUNGEWEAR



From running errands to cozying up on the couch, Jazzy Jamzzz™ let you do it in comfort, fun and style! Jazzy Jamzzz™ offers night shirts, lounge pants and shorts. Each are packaged in a matching patterned gift bag.



### Pink Chevron

66211-2-0571 - S/M



66212-2-0571 - L/XL



66213-2-0571 - 1X



### Blue Chevron

66214-2-0571 - S/M



66215-2-0571 - L/XL



66216-2-0571 - 1X



# Patterened Loungewear Shorts

100% POLY CREPE



**Multi Chevron**

66223-2-0560 - 1X



Comes packaged in matching pattern gift bag!



**Red Tribal Stripe**

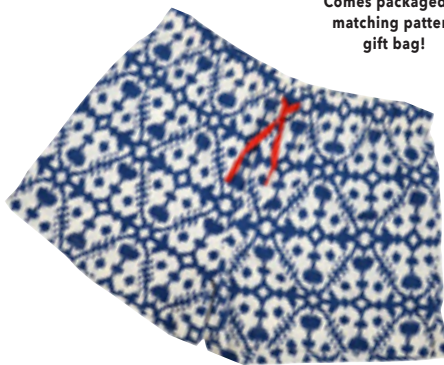
66224-2-0560 - S/M



66225-2-0560 - L/XL



66226-2-0560 - 1X



**Navy Ikat**

66227-2-0560 - S/M



66228-2-0560 - L/XL



66229-2-0560 - 1X



**Black & White Chevron**

66241-2-0560 - S/M



66242-2-0560 - L/XL



66243-2-0560 - 1X



**Primitive Medallion**

66244-2-0560 - S/M



66245-2-0560 - L/XL



66246-2-0560 - 1X



**Serpent**

66247-2-0560 - S/M



66248-2-0560 - L/XL



66249-2-0560 - 1X



**Nautical Navy**

66261-2-0560 - S/M



66262-2-0560 - L/XL



66263-2-0560 - 1X



**Floral Coral**

66264-2-0560 - S/M



66265-2-0560 - L/XL



66266-2-0560 - 1X



# Patterned Loungewear Pants

100% POLY CREPE

JAZZY JAMZZZ™  
LOUNGEWEAR



**Multi Chevron**

66202-2-0031 - L/XL



66203-2-0031 - 1X



Comes packaged in matching pattern gift bag!



**Red Tribal Stripe**

66204-2-0031 - S/M



66205-2-0031 - L/XL



66206-2-0031 - 1X



**Navy Ikat**

66207-2-0031 - S/M



66208-2-0031 - L/XL



66209-2-0031 - 1X



**Black & White Chevron**

66251-2-0031 - S/M



66252-2-0031 - L/XL



66253-2-0031 - 1X



**Primitive Medallion**

66254-2-0031 - S/M



66255-2-0031 - L/XL



66256-2-0031 - 1X



**Serpent**

66257-2-0031 - S/M



66258-2-0031 - L/XL



66259-2-0031 - 1X



**Nautical Navy**

66271-2-0031 - S/M



66272-2-0031 - L/XL



66273-2-0031 - 1X



**Floral Coral**

66274-2-0031 - S/M



66275-2-0031 - L/XL



66276-2-0031 - 1X



# Perfect Fit Long Tank

92% NYLON/ 8% SPANDEX • ONE SIZE FITS MOST

\*\*\* INCLUDES 1 OF EACH SIZE

4-PC ASSORTMENT  
67520-4-0004 \*\*\*



31" L



32" L  
(NOT INCLUDING STRAPS)



**Racerback - Nude**  
67521-2-0001



**Racerback - Black**  
67522-2-0001



**Spaghetti Strap - Nude**  
67523-2-0001



**Spaghetti Strap - Black**  
67524-2-0001



# Basic Tee

100% COTTON • KNITTED

\*\*\* INCLUDES 1 OF EACH SIZE

9-PC ASSORTMENT  
67500-9-0576 \*\*\*



**White**  
67501-2-0570 - S/M



67502-2-0570 L/XL



67503-2-0570 - 1X



**Navy**  
67504-2-0570 - S/M



67505-2-0570 L/XL



67506-2-0570 - 1X



**Black**  
67507-2-0570 - S/M



67508-2-0570 L/XL



67509-2-0570 - 1X





18-PC ASSORTMENT  
60180-18-0027



## Nubbie Fuzzy Footies

ONE SIZE FITS MOST • 98% POLYESTER/2% SPANDEX

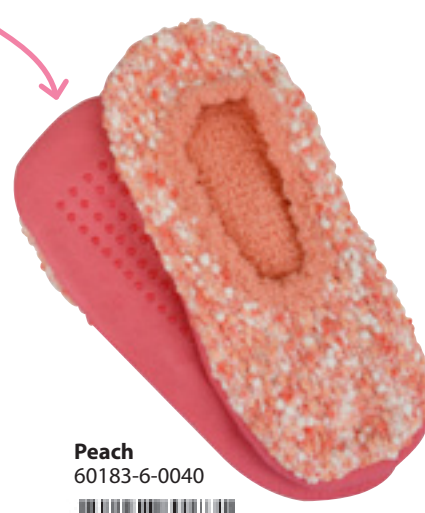
*No slip grip bottoms!*



**Light Blue**  
60181-6-0040



**Pink**  
60182-6-0040



**Peach**  
60183-6-0040



# Fuzzy Footies Countertop Display

18"DIA X 27"T • HOLDS 48 PCS

09924-1-0004



ONE SIZE FITS MOST.



# Fuzzy Footies Floor Display

18"DIA X 81"T • HOLDS 120 PCS

09928-1-0005



SHOWN WITH  
HEADER CARD.



# Fuzzy Footies Grid Display

24" W X 78" T • 50 HOOKS INCLUDED  
HOLDS 240 PCS  
(SIZE DOES NOT INCLUDE HEADER CARD)  
HEADER CARD INCLUDED

09931-1-0006



09923 DISPLAY  
INCLUDED WITH ASSORTMENT

# Point of Purchase Display

12.5"D X 18.5"T X 18.75"W

48-PC ASSORTMENT

60000-PD-00822



# 10 Classic Colors

BLUE/GREEN/PURPLE • RED • PINK • PURPLE • CHOCOLATE •  
BLACK • PURPLE/RED/VIOLET • BLUE/TEAL/LT BLUE •  
PINK/WHITE/PEACH • GRAY/BLACK/WHITE

60-PC ASSORTMENT

60000-60-00582



# 10 New Colors

60-PC ASSORTMENT

60000-NW-00582



# 20 Colors

120-PC ASSORTMENT

60000-120-00075



# Fuzzy Footies

ONE SIZE FITS MOST • 97% POLYESTER/3% SPANDEX

FUZZY FOOTIES

## FEATURES

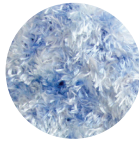
- COMFY & COZY
- SLIP RESISTANT BOTTOMS
- GREAT FOR TRAVEL
- WASHABLE



No slip grip bottoms!



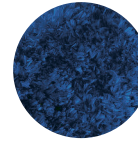
**Blue/Green/Purple**  
60001-6-5740



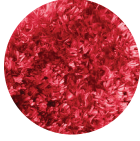
**Powder Blue/White**  
60014-6-5740



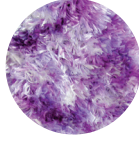
**Green/Purple/  
Lt Pink/Pink**  
60034-6-5740



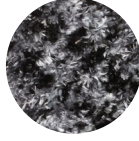
**Navy**  
60075-6-5740



**Red**  
60004-6-5740



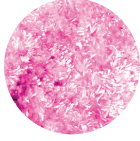
**Lavender/White**  
60015-6-5740



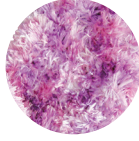
**Gray/Black/White**  
60035-6-5740



**Teal/Navy/Fuchsia**  
60070-6-5740



**Pink**  
60005-6-5740



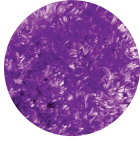
**Fuchsia/Pink/White**  
60016-6-5740



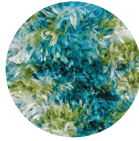
**Camel/Black**  
60036-6-5740



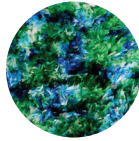
**Green/Pink/White**  
60071-6-5740



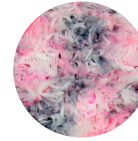
**Purple**  
60006-6-5740



**Lt Blue/Lt Green/  
White**  
60023-6-5740



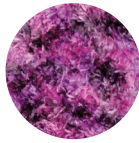
**Green/Blue/White**  
60037-6-5740



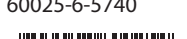
**White/Pink/Gray**  
60072-6-5740



**Chocolate**  
60007-6-5740



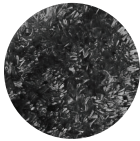
**Dk Purple/Pink/  
Purple**  
60025-6-5740



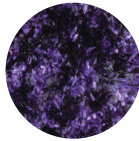
**Bright Pink**  
60039-6-5740



**Blue/Pink/Purple**  
60073-6-5740



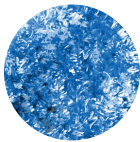
**Black**  
60008-6-5740



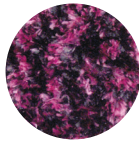
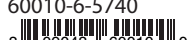
**Purple/Black**  
60026-6-5740



**Gray/Blush/White**  
60056-6-5740



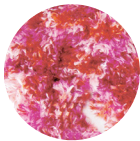
**Blue/Teal/Light  
Blue**  
60010-6-5740



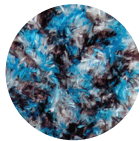
**Fuchsia/Black**  
60027-6-5740



**Purple/Green/Pink**  
60064-6-5740



**Red/Magenta/Pink**  
60011-6-5740



**Brown/White/  
Turquoise**  
60028-6-5740



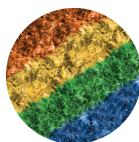
**Blue/Orange/Yellow**  
60066-6-5740



**Pink/White/Peach**  
60012-6-05740



**Blue/Navy/Teal**  
60031-6-5740



**Med Adult Rainbow**  
60098-6-5740

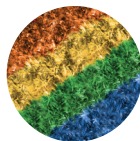


**White/Blue/Pink**  
60074-6-5740



## Kids!

APPROX. AGE: 5-9

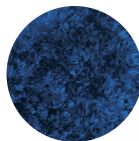


**Kids Rainbow**  
60097-6-0040



## Mens

APPROX. SIZE: 9-12



**Navy**  
60131-6-0050



**Black**  
60132-6-0050



**Chocolate**  
60133-6-0050



# Sequin Fuzzy Footies

80% POLYESTER/20% PLASTIC • SLIP RESISTANT BOTTOMS

36-PC ASSORTMENT  
60150-36-00081



**Black**

60151-3-0050 - S/M



60161-3-0050 - L/XL



**Pink**

60152-3-0050 - S/M

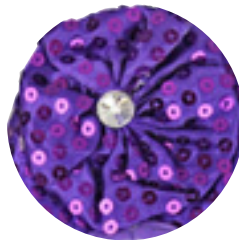


**Red**

60153-3-0050 - S/M



60163-3-0050 - L/XL



**Purple**

60154-3-0050 - S/M



60164-3-0050 - L/XL



**Fuchsia**

60155-3-0050 - S/M



60165-3-0050 - L/XL

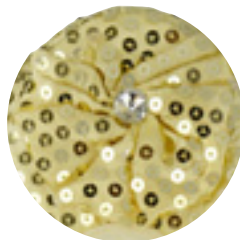


**Blue**

60156-3-0050 - S/M



60166-3-0050 - L/XL



**Gold**

60157-3-0050 - S/M



60167-3-0050 - L/XL



**Silver**

60168-3-0050 - L/XL





24-PC ASSORTMENT  
60340-24-0021



8 09048 60340 8

# Knee High Spa Socks

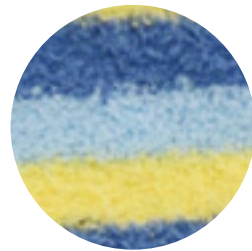
ONE SIZE FITS MOST • 97% POLYESTER/ 3% SPANDEX

NON SKID  
BOTTOMS



## FEATURES

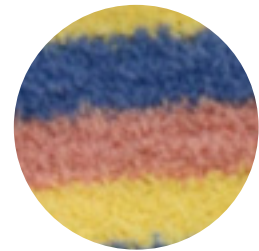
SUPER SOFT TO THE TOUCH  
SLIP RESISTANT  
ONE SIZE FITS MOST



**Blue/Yellow**  
60342-6-0050



8 09048 60342 2



**Blue/Yellow/Pink**  
60343-6-0050



8 09048 60343 9



**Turquoise/White/Pink**  
60344-6-0050



8 09048 60344 6



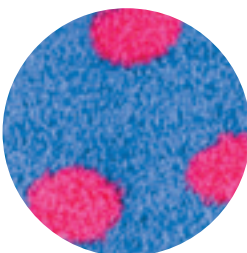
**Purple/White/Pink**  
60345-6-0050



8 09048 60345 3

# Polka Dot Spa Socks

ONE SIZE FITS MOST • 97% POLYESTER/ 3% SPANDEX



**Blue/Magenta**  
60311-6-0040



8 09048 60311 8



**Pink/Lime**  
60314-6-0040



8 09048 60314 9

SPRING SCARVES

# Express Your Sock Side Print Socks

UNISEX \* ONE SIZE FITS MOST • 98% POLYESTER/2% SPANDEX  
ONE OF A KIND DESIGNS EXCLUSIVE TO RCS

\*\*\* NOT INCLUDING ITEMS  
60496, 60497, 60498, & 60499

90-PC ASSORTMENT  
60480-90-00063 \*\*\*

8 09048 60480 1



**Beer**  
60481-6-0040

8 09048 60481 8



**Bicycle**  
60482-6-0040

8 09048 60482 5



**Birdie**  
60483-6-0040

8 09048 60483 2



**Espresso**  
60484-6-0040

8 09048 60484 9





**Garden**

60485-6-0040



8 09048 60485 6



**Heart**

60486-6-0040



8 09048 60486 3



**Meow**

60487-6-0040



8 09048 60487 0



**Music**

60488-6-0040



8 09048 60488 7



**Liberty**  
60489-6-0040



8 09048 60489 4



**Paris**  
60490-6-0040



8 09048 60490 0



**Ruff**  
60491-6-0040



8 09048 60491 7



**Sugar Skullz**  
60492-6-0040



8 09048 60492 4



**USA**  
60493-6-0040



8 09048 60493 1





**Wine**  
60494-6-0040  
8 09048 60494 8



**World**  
60495-6-0040  
8 09048 60495 5



\*\*\* NOT INCLUDED IN ASSORTMENT

**Flip**  
60496-6-0040  
8 09048 60496 2



\*\*\* NOT INCLUDED IN ASSORTMENT

**Rainbow Strokes**  
60497-6-0040  
8 09048 60497 9



\*\*\* NOT INCLUDED IN ASSORTMENT

**Pride Chevron**  
60498-6-0040  
8 09048 60498 6



\*\*\* NOT INCLUDED IN ASSORTMENT

**Rainbows**  
60499-6-0040  
8 09048 60499 3



*Lace tunic and other styles can be found on pages 16-17.*

## Leggings

ONE SIZE FITS MOST  
 100% POLYESTER (61193 RHINESTONE) • 50% COTTON • 48% POLYESTER/2% LYCRA (67511 DENIM) • 95% POLYESTER/5% SPANDEX (67151 & 67152 FLORAL)

**Rhinestone - Gray**  
 61193-2-0050



**Basic Denim**  
 67511-2-0080



**Royal Blue Floral**  
 67151-2-0060



**Navy Floral**  
 67152-2-0060





6-PC ASSORTMENT  
62120-6-0063



# Lace Footless Tights

ONE SIZE FITS MOST • 95% POLYESTER/5% POLYURETHANE

**Purple**  
62121-2-0060



**Blue**  
62122-2-0060



**Black**  
62123-2-0060



TIGHTS



6-PC ASSORTMENT  
99806-6-0042



# Patterned Tights

ONE SIZE FITS MOST •  
85% NYLON • 10% SPANDEX • 5% POLYESTER (POLKA DOT) •  
90% POLYESTER/10% SPANDEX (CHEETAH & CAMO)

**Polka Dot**  
61197-2-0040



**Cheetah**  
61198-2-0040



**Camo**  
61199-2-0040



# Fedora Hats

100% PAPER • ONE SIZE FITS MOST

9-PC ASSORTMENT

68060-9-0054



White

68061-3-0050



Khaki

68062-3-0050



Black

68063-3-0050







12-PC ASSORTMENT  
68010-12-0087



# Roll-Up Bling Stripe Visors

ADJUSTABLE • 100% PAPER • 5" BRIM

ROLL-UP VISORS

**Blue/Orange**



**Ivory/Black**



*Rolls up  
for easy  
packing!*

**Green/Blue**



**Orange/Pink**



\* ALL PAPER HATS ARE WATER SAFE

Order Toll Free 1.877.985.0405 • Fax 1.513.774.1601

Visit our website or call to receive a complete catalog to see all styles of fashion and giftware RCS offers.

# Aluminum Credit Card Wallet

3.25" X 4.5" X .875" • 35% ALUMINUM/65% PVC • \$2.25 EACH

24-PC ASSORTMENT  
49169-1-0045 \*\*\*



\*\*\* INCLUDES COUNTERTOP DISPLAY  
2 OF EACH DESIGN (6 DESIGNS)





6-PC ASSORTMENT  
60760-6-0099



# 3 Piece Beach Bag Set

BAG: 22.5W X 15.5H X 7"DEPTH/ STRAP DROP: 10.5"  
OUTER SHELL COMPOSITION: 80% PAPER/20% POLYESTER  
LINING INSIDE BAG: 100% POLYESTER  
FRONT POCKET ON BAG: 12.5"W X 10.25"H • CLEAR PLASTIC

PILLOW: 11W X 8T" • 80% PAPER/20% POLYESTER -  
INSIDE: 100% POLYESTER

MAT: 35.5W X 70H" • 100% GRASS CLOTH

3PC BEACH BAGS



**Navy**  
60765-2-0561



*Includes one of each:*



*Bag*



*Pillow*



*Roll-Up Mat*



**Orange**  
60766-2-0561



**Fuchsia**  
60767-2-0561



# Beaded Clutch/ Crossbody Bag

4.5" X 7.5" • 100% POLYESTER • GLASS BEADS



**Natural**  
60511-3-0001  
8 09048 60511 2



**Black**  
60512-3-0001  
8 09048 60512 9



# Crossbody Glimmer Pouches

4" X 7" • 100% POLYESTER • GLASS BEADS

9-PC ASSORTMENT  
60500-9-0009

8 09048 99032 4



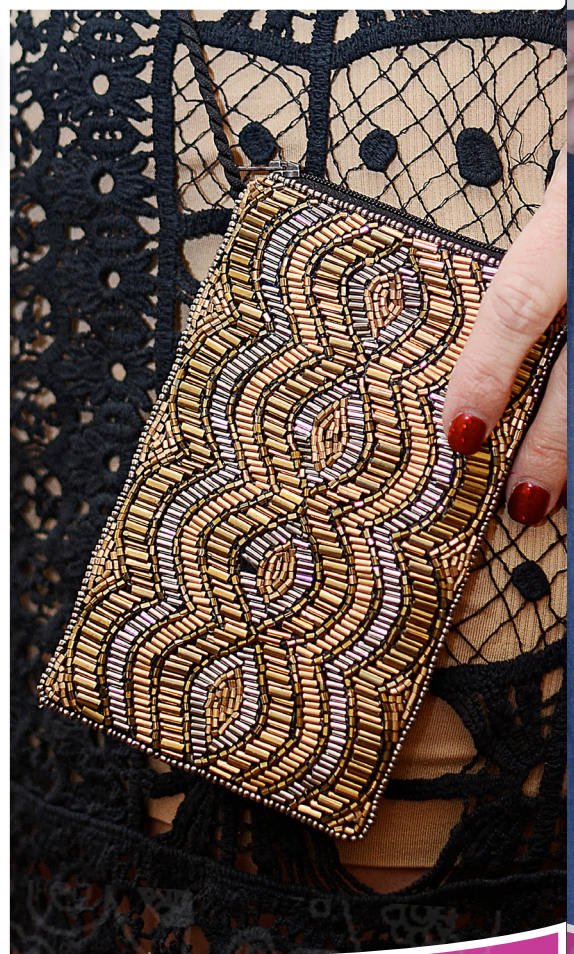
**Copper**  
60501-3-0001  
8 09048 60501 3



**Gun Metal**  
60502-3-0001  
8 09048 60502 0



**Bronze**  
60503-3-0001  
8 09048 60503 7





9-PC ASSORTMENT  
60590-9-0576



## Around the World Wristlets

5.12" X 7.68"



USA  
60591-3-0570



NYC  
60593-3-0570



Paris  
60592-3-0570



9-PC ASSORTMENT  
60460-9-0504



## Batik Crossbody Bags

8" • 100% COTTON ST • MADE IN INDIA



Crossbody Bag -  
Pencil Batik  
60461-3-0540



Crossbody Bag -  
Diamond Batik  
60462-3-0540



Crossbody Bag -  
Floral Batik  
60463-3-0540





## Reading Glasses

PLASTIC FRAMES • EACH DUMP DISPLAY INCLUDES 30 GLASSES WITH CASES • +1, +1.50, +2, +2.50, +3.00 PRESCRIPTIONS • \$4.00 EACH

3-PC ASSORTMENT  
49170-3-00063 \*\*\*



\*\*\* INCLUDES 1 DUMP OF EACH STYLE (49171, 49172, & 49173)



Woven Case

49171-1-00021





**Nylon Case**

49172-1-00021



**Suede Case**

49173-1-00021



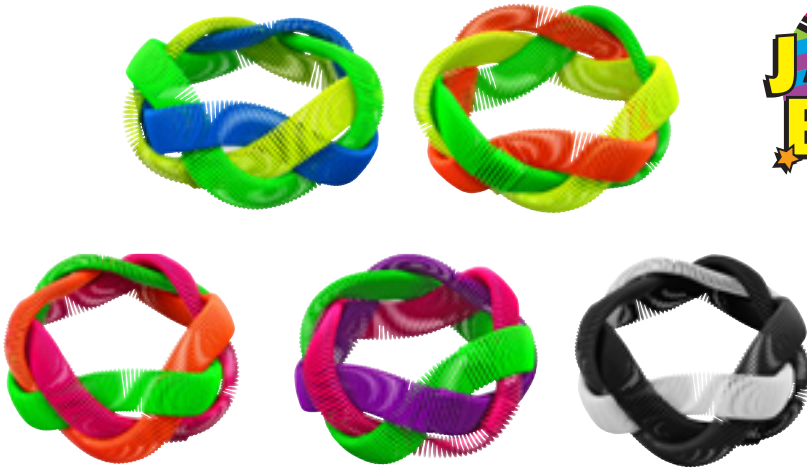
# Jazzy Banz™ Triple

ONE SIZE FITS MOST • 100% STEEL WIRE BRACELETS •  
 5 STYLES WITH 10 SETS OF EACH INCLUDED (MIXED COLORS)  
 2 RECTANGLE BASKETS INCLUDED (MIXED COLORS) • \$1.00 EA •  
 EACH SET OF BRACELETS COMES WITH HANG TAG AND  
 POLY BAGGED FOR PEG DISPLAY

50-PC ASSORTMENT  
**68999-50-0005** \*\*\*



\*\*\* INCLUDES FREE BASKET DISPLAY



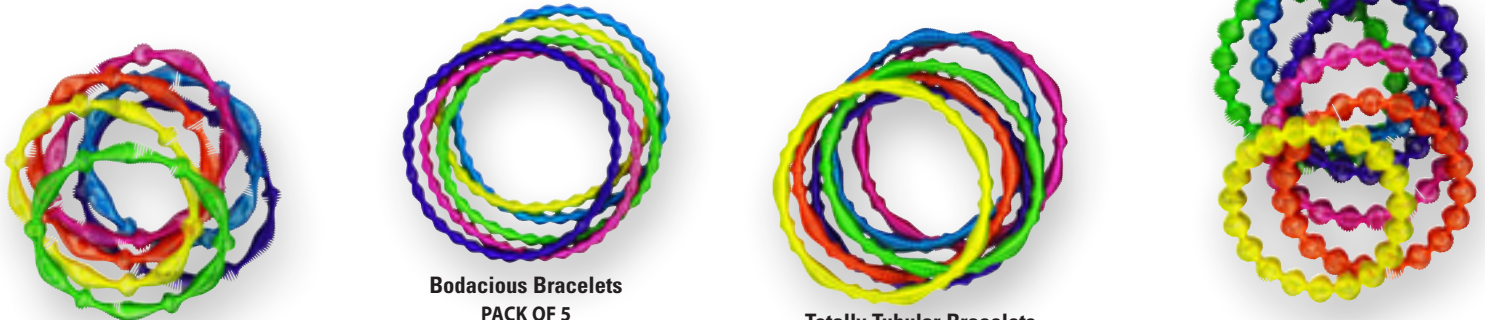
# Jazzy Banz™ Triple

ONE SIZE FITS MOST • 100% STEEL WIRE BRACELETS • 4 STYLES IN ASSORTED COLORS (SHOWN)  
 • 48 BAGS (12 BAGS EACH STYLE; 3 BRACELET PER BAG - FLASHY, 3 BRACELET PER BAG - FANTABULOUS,  
 3 BRACELET PER BAG - TOTALLY TUBULAR, 5 BRACELET PER BAG - BODACIOUS  
 • 2 RECTANGLE BASKETS INCLUDED (MIXED COLORS) • EACH SET OF BRACELETS COMES WITH HANG  
 TAG AND POLY BAGGED FOR PEG DISPLAY • \$1.25 PER SET

48-PC ASSORTMENT  
**68990-48-0006** \*\*\*



\*\*\* INCLUDES FREE BASKET DISPLAY



**Flashy Bracelets**  
 PACK OF 3  
 ASST COLORS

**Bodacious Bracelets**  
 PACK OF 5  
 ASST COLORS

**Totally Tubular Bracelets**  
 PACK OF 3  
 ASST COLORS

**Fantabulous Bracelets**  
 PACK OF 3  
 ASST COLORS

# Rectangle Baskets With Flower

4" T X 9.5" W X 5.5" D • 100% PAPER BAKET • MULTIPLE COLORS  
 4 OF EACH COLOR (5 COLORS)

20-PC ASSORTMENT  
**09962-20-0052**



GO GREEN!



\*PRODUCT NOT INCLUDED





16-PC ASSORTMENT  
69060-16-0027 \*\*\*



\*\*\* INCLUDES FREE BASKET DISPLAY

## Cuff Bracelets

.09" X 2.36" X 2.4" • 100% BRASS • GLASS CRYSTALS • ONE SIZE FITS MOST • 4 DESIGNS • 4 PEWTER FINISH • \$4.50 EACH

BRACELETS



TEAL



WHITE



PINK



BLUE

36-PC ASSORTMENT  
69010-36-0027 \*\*\*



\*\*\* INCLUDES FREE BASKET DISPLAY

## Glass Crystal Bracelets

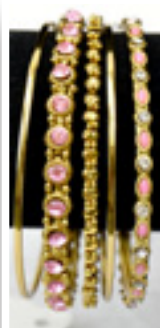
3" DIAMETER • 100% ALLOY 3 METALS • 100% IRON METAL • GLASS & ACRYLIC CRYSTALS • \$2.00 EACH



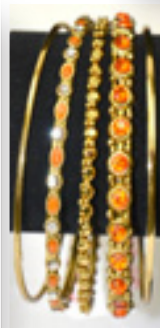
5 BRACELETS IN ONE UNIT



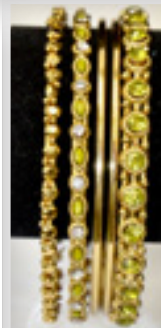
Clear w/Gold



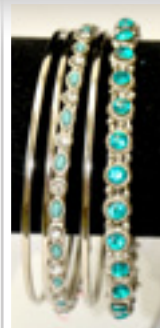
Pink w/Gold



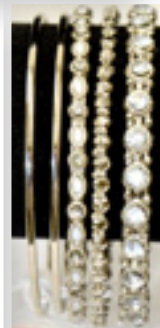
Orange w/Gold



Green w/Gold



Turquoise w/Silver



Clear w/Silver

# Round Table Display

HOLDS 90 PACKS • SHOE NOT INCLUDED



09964-1-0004

# Square Table Display

HOLDS 60 PACKS



09965-1-0004

**PURCHASE  
 69500 -  
 108 PIECE ASSORTMENT  
 AND RECEIVE ONE OF  
 THESE DISPLAYS AT  
 NO CHARGE.**

## Neon Jazzy Sport Laces®

30-PC ASSORTMENT  
**69520-30-00021**



**Neon Pink**  
 69521-6-0040



**Neon Yellow**  
 69522-6-0040



**Neon Green**  
 69523-6-0040



**Neon Orange**  
 69524-6-0040



**Neon Multi**  
 69532-6-0040



## Fanwear® #1

## Fanwear Jazzy Sport Laces®



**Red/White**  
 69551-6-0040



**Black/Gold**  
 69552-6-0040



**Blue/Gold**  
 69553-6-0040



**Blue/White**  
 69554-6-0040



**Purple/Gold**  
 69555-6-0040



**Red/Gray**  
 69556-6-0040



**Orange/Black**  
 69557-6-0040



**Red/Black**  
 69558-6-0040



**Green/Gold**  
 69559-6-0040



**Blue/Orange**  
 69560-6-0040



**Maroon/Gold**  
 69567-6-0040



**Maroon/White**  
 69568-6-0040





SCAN TO  
CHECK OUT THE  
INSTRUCTIONAL  
VIDEO



**ORDER  
NOW!!**

JAZZY SPORT LACES



PATENT PENDING D 736, 514 S

[www.jazzysportlaces.com](http://www.jazzysportlaces.com)

### FEATURES

- NO TIE • WEAR FOR ANY SPORT OR EVERYDAY FASHION • \$4.00 WHOLESALE • MIN 6 PER COLOR
- ADJUSTABLE LACES FITS TODDLERS TO ADULTS • SILICONE LACES • 14 PER PACKAGE

### SHOES BECOME SLIP-ON/SLIP-OFF!



**Purple**  
69501-6-0040



**Red**  
69502-6-0040



**Orange**  
69503-6-0040



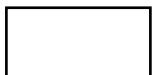
**Yellow**  
69504-6-0040



**Green**  
69505-6-0040



**Blue**  
69506-6-0040



**White**  
69507-6-0040



**Black**  
69508-6-0040



**Pink**  
69509-6-0040



**Brown**  
69510-6-0040



**Camo**  
69511-6-0040



**Rainbow**  
69531-6-0040



### Jazzy Sport Laces® 10 Best Selling Colors

PURPLE • RED • BLUE • WHITE • BLACK • PINK • NEON PINK  
NEON GREEN • RAINBOW • NEON MULTI

60-PC ASSORTMENT

**69500-60-00042**



### Jazzy Sport Laces®

PURPLE • RED • ORANGE • YELLOW • GREEN • BLUE • WHITE  
BLACK • PINK • BROWN • CAMO • RAINBOW

72-PC ASSORTMENT

**69500-72-00882**



### Jazzy Sport Laces®

PURCHASE THIS ASSORTMENT AND RECEIVE 09964 OR 09965 AT NO CHARGE

108-PC ASSORTMENT

**69500-108-00234**



- NEVER TIE YOUR SHOES AGAIN
- PERSONALIZE WITH STICKERS
- SMILEY FACES, SPORTS THEMED AND LETTER STICKERS ALL INCLUDED
- FULLY ADJUSTABLE TO FIT ALL SIZE SHOES
- IDEAL FOR PEOPLE HAVING DIFFICULTY TYING THEIR SHOES
- ONE SIZE FITS MOST
- AGES 6 AND UP



SCAN TO SEE VIDEO!



**Rainbow**

90001-6-0540



**Neon**

90002-6-0540



12-PC ASSORTMENT  
49140-12-0087 \*\*\*



# Vintage Style Lantern

9.5" L X 7" W X 4.5" H • METAL/GLASS • 2D BATTERIES REQUIRED (NOT INCLUDED) • BRIGHT LED LIGHTS • KNOB IS DIMMER SWITCH

\*\*\* INCLUDES 4 COLORS (3 EACH)



**Yellow**  
49141-12-0560



12-PC ASSORTMENT  
49160-12-0084 \*\*\*



# USB Mini Fans

5.75" W X 6" L • USB 49.5" L • PLASTIC/METAL • USB CORD INCLUDED

\*\*\* INCLUDES 4 COLORS (3 EACH)



**Lime**  
49161-6-0040



**Black**  
49164-6-0040



**Pink**  
49162-6-0040



**Periwinkle**  
49163-6-0040



NOVELTY

# Emotion Solar Groovers

2.5"W X 2.75"H • PLASTIC • SOLAR PANEL • \$2.00 EACH

\*\*\*INCLUDES COUNTERTOP DISPLAY

48-PC ASSORTMENT  
49097-1-0069 \*\*\*



# Happy Groovers

SOLAR POWERED • FLOWERS & LEAVES WIGGLE • WORKS WITH INDOOR LIGHT • USE IN CAR, WINDOW OR OFFICE • DOUBLE SIDED FOAM STICKER INCLUDED • \$2.00 EACH

48-PC ASSORTMENT  
49096-1-0069 \*\*\*



\*\*\* 4 COUNTERTOP DISPLAYS  
6 STYLES (2 EACH/DISPLAY)



SMILEY



HAVE A NICE DAY!



SMILE!



COLOR SWIRLS



PAINT SPLATTERS



BLACK SWIRLS

\*\*\* INCLUDES 2 - 24PC  
COUNTERTOP DISPLAY

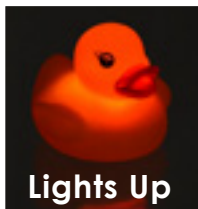
48-PC ASSORTMENT  
49197-1-0069 \*\*\*



## LED Floating Ducks

2.4" X 2.4" X 2" • ENVIRONMENTAL PVC • LIGHTS UP •  
\$2.00 EACH

NOVELTY



Lights Up



48-PC ASSORTMENT  
49196-1-0027 \*\*\*



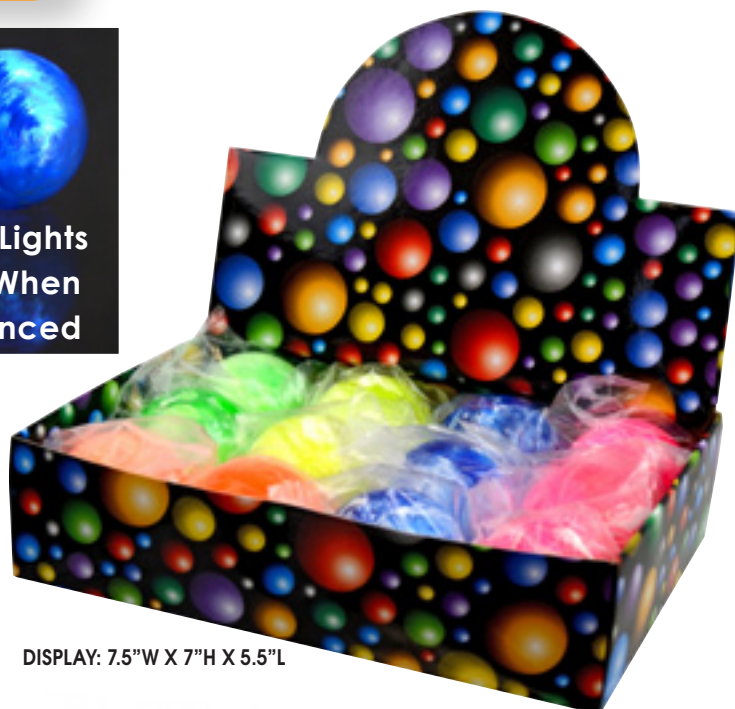
\*\*\* 4 COUNTERTOP DISPLAYS  
12 BALLS EACH

## LED Bouncing Balls

1.91" DIA • RUBBER • \$1.50 EACH • DISPLAY INCLUDED •  
EACH PDQ INCLUDES  
3 - PINK, 3 - BLUE, 2 - ORANGE, 2 - YELLOW, 2 - GREEN



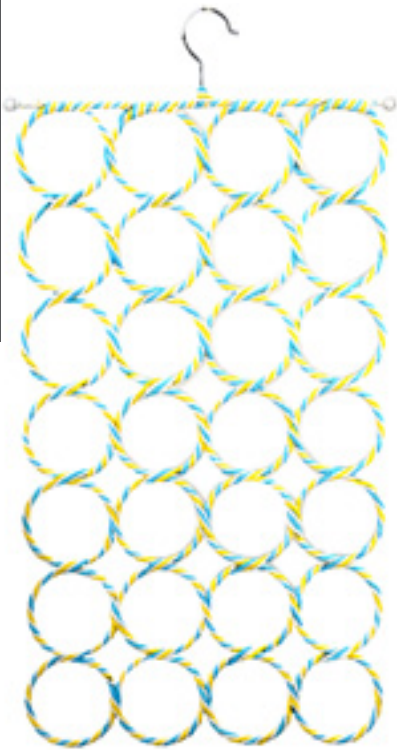
Ball Lights  
Up When  
Bounced



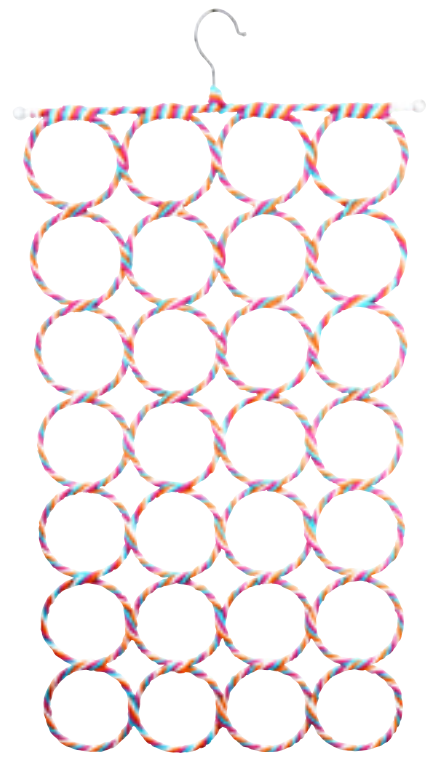
DISPLAY: 7.5"W X 7"H X 5.5"L

# Scarf Organizers

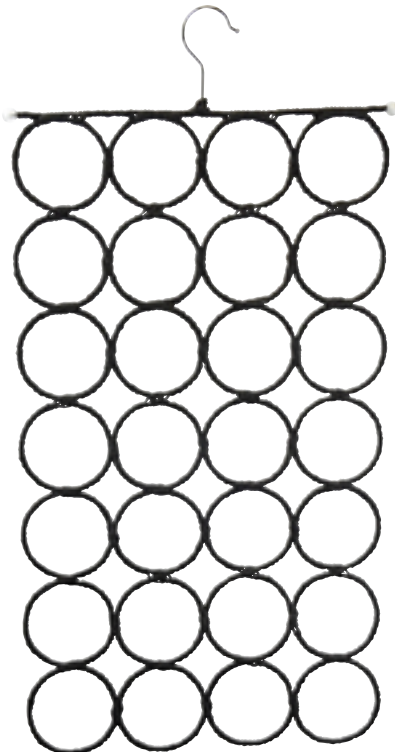
15"W X 26"L • 3.5" HANGER • 28 CIRCLES TO HANG YOUR SCARVES



**Yellow/Blue/White**  
99948-6-0540



**Pink/Blue/Yellow/White**  
99949-6-0540



**Black**  
99947-6-0540



**White**  
99946-6-0540



\*PRODUCT NOT INCLUDED  
WITH ANY DISPLAYS



# Scarf Display

20" X 67" • 9 BARS TO HANG SCARVES FROM

GREAT ACCENT PIECE TO SHOW OFF YOUR SCARVES.  
USE LARGER PINS TO SHOW OFF SCARF CHARMS,  
RINGS, OR OTHER JEWELRY PIECES.



**Scarf Display**  
09952-1-0004



# Spinning Scarf Display

24" X 24" X 63" • POWDER COATED METAL



DISPLAY  
WITHOUT  
PRODUCT.  
ARMS  
ARE  
ADJUSTABLE.

**Spinning Scarf Display**  
09972-1-0004



\*PRODUCT NOT INCLUDED  
WITH ANY DISPLAYS



## Indigo Batik Assortment

34-PC ASSORTMENT  
99757-34-00953



**YOUR PRICE  
\$359.00**

**Includes:**

- 66761 - Ruffle Sleeve Dress Denim S/M (1) \$18.00
- 66762 - Ruffle Sleeve Dress Denim L/XL (1) \$18.00
- 66763 - Ruffle Sleeve Dress Floral Batik S/M (1) \$18.00
- 66764 - Ruffle Sleeve Dress Floral Batik L/XL (1) \$18.00
- 66791 - Tunic Pencil Batik S/M (2) \$14.50
- 66792 - Tunic Pencil Batik L/XL(2) \$14.50
- 66793 - Tunic Floral Batik S/M (2) \$14.50
- 66794 - Tunic Floral Batik L/XL(2) \$14.50
- 66773 - Drawstring Skirt Floral Batik(2) \$12.00
- 65321 - Sleeveless Denim Vest S/M(2) \$15.00
- 65322 - Sleeveless Denim Vest L/XL(2) \$15.00
- 66721 - Short Diamond Batik S/M (1) \$7.50
- 66722 - Short Diamond Batik L/XL (1) \$7.50
- 66723 - Short Pencil Batik S/M (1) \$7.50
- 66724 - Short Pencil Batik L/XL (1) \$7.50
- 64441 - Indigo Pom Pom Scarf(3) \$5.50
- 60461 - Crossbody Bag Pencil Batik (3) \$4.50
- 60462 - Crossbody Bag Diamond Batik (3) \$4.50
- 60463 - Crossbody Bag Floral Batik(3) \$4.50



**BUY THE ENTIRE ASSORTMENT  
AND SAVE 5%**



# Kimono/Shrug Assortment

28-PC ASSORTMENT

99758-28-00713



**YOUR PRICE  
\$317.00**

**Includes:**

- 67371 - Embroidered Shrug Pastel Paisley (1) \$15.00
- 67372 - Embroidered Shrug Bright Paisley (1) \$15.00
- 67451 - Medallion Vest/Scarf Pink (1) \$10.50
- 67452 - Medallion Vest/Scarf Navy (1) \$10.50
- 67381 - Embroidered Vine Shrug Fuschia (1) \$15.00
- 67382 - Embroidered Vine Shrug Peacock Blue(1) \$15.00
- 67383 - Embroidered Vine Shrug Navy (1) \$15.00
- 67401 - Lace Trim Shrug Banana/Pink (1) \$12.50
- 67404 - Lace Trim Shrug Cherry (1) \$12.50
- 67405 - Lace Trim Shrug Violet (1) \$12.50
- 67406 - Lace Trim Shrug Peach (1) \$12.50
- 67407 - Lace Trim Shrug Honeydew (1) \$12.50
- 67391 - Sheer Shrug Dusty Pink (1) \$7.50
- 67392 - Sheer Shrug Dusty Aqua (1) \$7.50
- 67393 - Sheer Shrug Black (1) \$7.50
- 67481 - Side Button Stripe Shawl Taupe (1) \$11.50
- 67482 - Side Button Stripe Shawl Black (1) \$11.50
- 67483 - Side Button Stripe Shawl Navy (1) \$11.50
- 67491 - Free Fit Floral Kimono Seafoam (1) \$7.50
- 67492 - Free Fit Floral Kimono Navy (1) \$7.50
- 67493 - Free Fit Floral Kimono Shell Pink(1) \$7.50
- 67471 - Bandana Paisley Kimono Coral (1) \$11.50
- 67472 - Bandana Paisley Kimono Mint (1) \$11.50
- 67421 - Crochet Trim Kimono Floral Border (1) \$11.00
- 67422 - Crochet Trim Kimono Cherry Blossom (1) \$11.00
- 67442 - Free Fit Fringed Kimono (1) \$9.00
- 67411 - Fringed Sleeve Kimono Multi Floral (1) \$12.50
- 67412 - Fringed Sleeve Kimono Poppy (1) \$12.50

**BUY THE ENTIRE ASSORTMENT  
AND SAVE 5%**



**BUY THE ENTIRE ASSORTMENT AND SAVE 5%**

**Spring Scarves Assortment**

109-PC ASSORTMENT  
99759-109-05794



Average Price Per Scarf is \$4.22

**YOUR PRICE \$457.50**

**Includes:**

- 64441 - Pom Pom Scarf Indigo (3)
- 64501 - Skinny Scarf Pink Ditzzy (3)
- 64502 - Skinny Scarf Black Ditzzy (3)
- 64511 - Skinny Scarf Faux Suede Blush (3)
- 64512 - Skinny Scarf Faux Suede Cream (3)
- 64513 - Skinny Scarf Faux Suede Black (3)
- 64522 - Skinny Scarf Black/White Dot (3)
- 64523 - Skinny Scarf Black/White Stripe (3)
- 64531 - Skinny Scarf Paisley Purple (3)
- 64532 - Skinny Scarf Paisley Turquoise (3)
- 64533 - Skinny Scarf Paisley Navy (3)
- 64541 - Skinny Scarf Floral Seafoam(3)
- 64542 - Skinny Scarf Floral Navy (3)
- 64543 - Skinny Scarf Floral Shell Pink (3)
- 64601 - Rome Scarf Pink (3)
- 64602 - Rome Scarf Blue (3)
- 64603 - Rome Scarf White (3)
- 64611 - New York Scarf Pink (3)
- 64612 - New York Scarf White (3)
- 64621 - Bicycle Scarf Turquoise (3)
- 64622 - Bicycle Scarf Pink(3)
- 64631 - Floral Stripe Scarf Powder Blue (3)
- 64632 - Floral Stripe Scarf Sweet Lilac (3)
- 64633 - Floral Stripe Scarf Rose (3)
- 64641 - Floral Splash Scarf Dove Grey (3)
- 64642 - Floral Splash Scarf Honey Dew (3)
- 64651 - Batik Scarf Coral (3)
- 64652 - Batik Scarf Raspberry (3)
- 64653 - Batik Scarf Grey (3)
- 64654 - Batik Scarf Teal (3)
- 64671 - Geo Dot Scarf Dusty Pink (3)
- 64672 - Geo Dot Scarf Sky Blue (3)
- 64681 - Watercolor Hummingbird Scarf Teal (3)
- 64682 - Watercolor Hummingbird Scarf Wine (3)
- 99946 - Scarf Organizer White (6)
- 09972 - Round Metal Display (1)

\* Display Included



Scarf Organizer White



DISPLAY WITHOUT PRODUCT. ARMS ARE ADJUSTABLE.

INCLUDED WITH ASSORTMENT

Round Metal Display





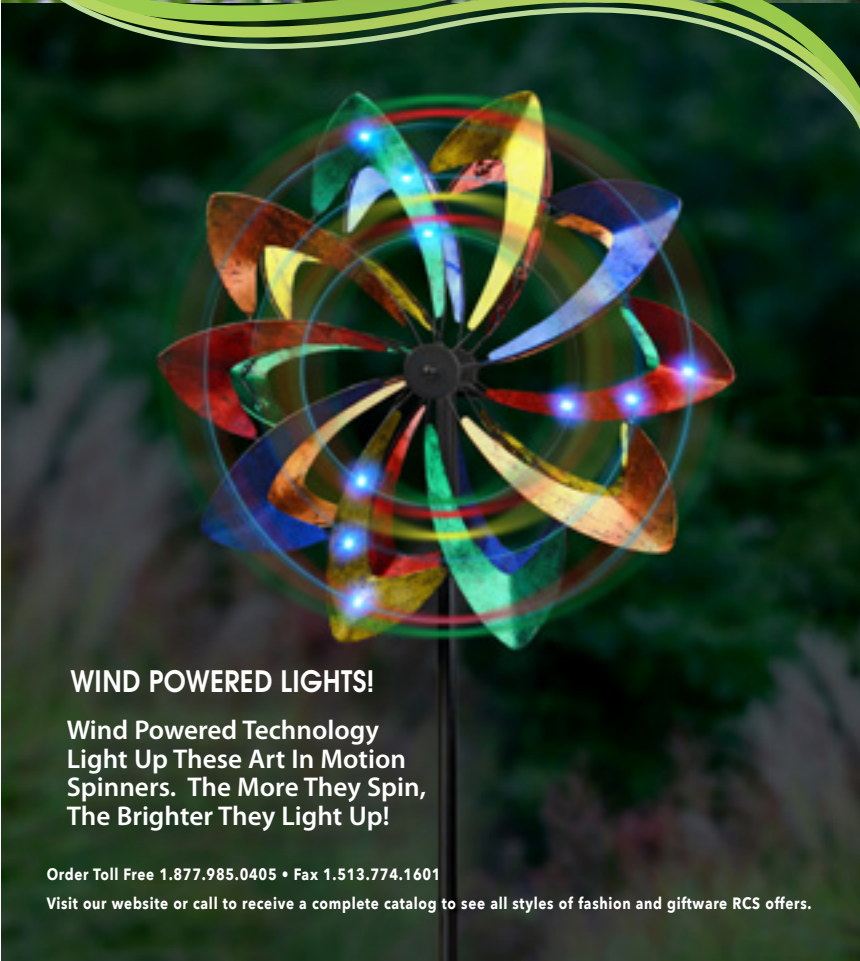


# Wind Art



**Available NOW**  
**2017 Garden Catalog**  
**Call Us For Details**

**Visit Our Website!**  
**[www.rcsgifts.com](http://www.rcsgifts.com)**



## WIND POWERED LIGHTS!

Wind Powered Technology  
Light Up These Art In Motion  
Spinners. The More They Spin,  
The Brighter They Light Up!

Order Toll Free 1.877.985.0405 • Fax 1.513.774.1601

Visit our website or call to receive a complete catalog to see all styles of fashion and giftware RCS offers.



Price: \$5.00



**Red Carpet Studios, Ltd.**  
107 Northeast Drive  
Loveland, Ohio 45140

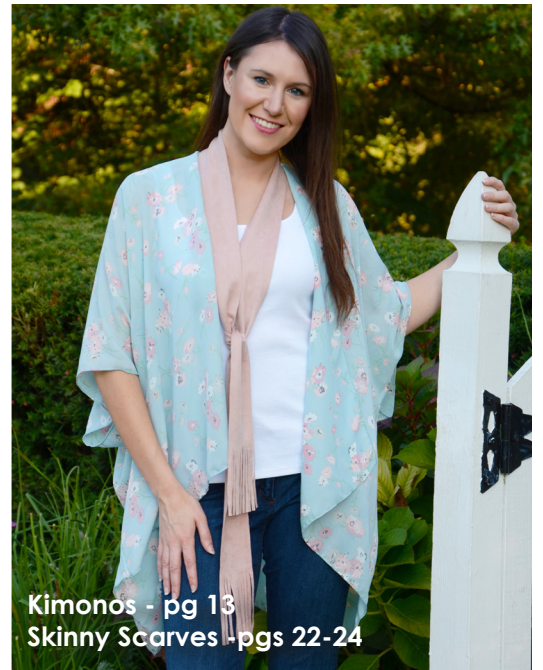
**Local** 1-513-774-1600  
**Toll Free** 1-877-985-0405  
**Fax** 1-513-774-1601  
**Email** mail@rcsgifts.com

PRSR STD  
U.S. POSTAGE  
**PAID**  
CINCINNATI, OH  
PERMIT NO. 6657

**WATCH FOR THE**  
**2017 RCS**  
**HOLIDAY COLLECTION**  
**COMING IN JANUARY**  
**and**  
**FALL COLLECTION**  
**COMING IN JUNE**



Embroidered Shrugs - pgs 8-9



Kimonos - pg 13  
Skinny Scarves - pgs 22-24



Lace Trim  
Shrugs - pg10

[www.rcsgifts.com](http://www.rcsgifts.com)